

Product Name: SUHW1 Rabbit Polyclonal Antibody
Catalog #: APRab18433



Summary

Production Name	SUHW1 Rabbit Polyclonal Antibody
Description	Rabbit Polyclonal Antibody
Host	Rabbit
Application	WB,IHC-P
Reactivity	Human,Rat,Mouse

Performance

Conjugation	Unconjugated
Modification	Unmodified
Isotype	IgG
Clonality	Polyclonal
Form	Liquid
Storage	Store at 4°C short term. Aliquot and store at -20°C long term. Avoid freeze/thaw cycles.
Buffer	Liquid in PBS containing 50% glycerol, 0.5% BSA and 0.02% New type preservative N.
Purification	Affinity purification

Immunogen

Gene Name	ZNF280A
Alternative Names	ZNF280A; SUHW1; ZNF280; ZNF636; Zinc finger protein 280A; 3'OY11.1; Suppressor of hairy wing homolog 1; Zinc finger protein 636
Gene ID	129025.0
SwissProt ID	P59817.The antiserum was produced against synthesized peptide derived from human ZNF280A. AA range:441-490

Application

Dilution Ratio	WB 1:500-2000, IHC-P 1:50-300
Molecular Weight	50kDa

Product Name: SUHW1 Rabbit Polyclonal Antibody
Catalog #: APRab18433

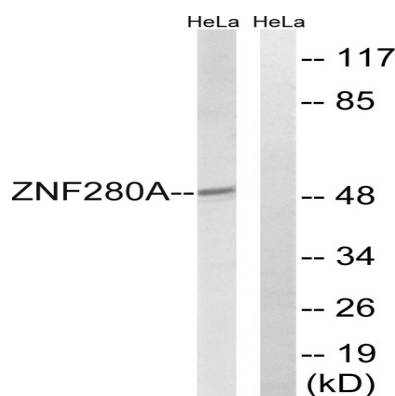


Background

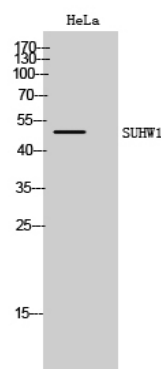
This gene encodes a zinc finger protein. The encoded protein contains 4 C2H2-type zinc fingers, which are commonly found in transcription factors. A variety of functions may be performed by this type of zinc finger protein, including the binding of DNA or RNA. [provided by RefSeq, Apr 2014],function:May function as a transcription factor.,similarity:Contains 4 C2H2-type zinc fingers.,

Research Area

Image Data



Western blot analysis of lysates from HeLa cells, using ZNF280A Antibody. The lane on the right is blocked with the synthesized peptide.



Western Blot analysis of HeLa cells using SUHW1 Polyclonal Antibody cells nucleus extracted by Minute TM Cytoplasmic and Nuclear Fractionation kit (SC-003, Invent biotech, MN, USA) .

Note

For research use only.