

**Product Name: SUDD Rabbit Polyclonal Antibody**  
**Catalog #: APRab18430**



## Summary

<b>Production Name</b>	SUDD Rabbit Polyclonal Antibody
<b>Description</b>	Rabbit Polyclonal Antibody
<b>Host</b>	Rabbit
<b>Application</b>	WB,ELISA,IHC-P
<b>Reactivity</b>	Human,Mouse

## Performance

<b>Conjugation</b>	Unconjugated
<b>Modification</b>	Unmodified
<b>Isotype</b>	IgG
<b>Clonality</b>	Polyclonal
<b>Form</b>	Liquid
<b>Storage</b>	Store at 4°C short term. Aliquot and store at -20°C long term. Avoid freeze/thaw cycles.
<b>Buffer</b>	Liquid in PBS containing 50% glycerol, 0.5% BSA and 0.02% New type preservative N.
<b>Purification</b>	Affinity purification

## Immunogen

<b>Gene Name</b>	RIOK3
<b>Alternative Names</b>	RIOK3; SUDD; Serine/threonine-protein kinase RIO3; RIO kinase 3; sudD homolog
<b>Gene ID</b>	8780.0
<b>SwissProt ID</b>	O14730.The antiserum was produced against synthesized peptide derived from human RIOK3. AA range:271-320

## Application

<b>Dilution Ratio</b>	WB 1:500-2000, IHC-P 1:50-300, ELISA 2000-20000
<b>Molecular Weight</b>	59kDa

## Background

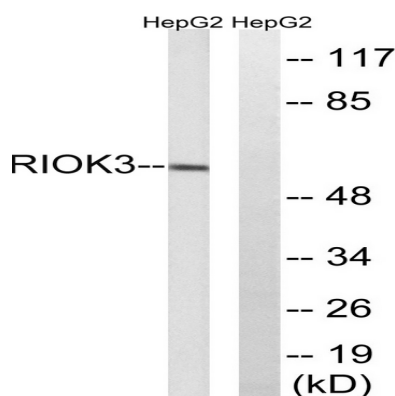
**Product Name: SUDD Rabbit Polyclonal Antibody**  
**Catalog #: APRab18430**



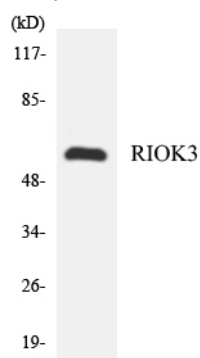
This gene was identified by the similarity of its product to the *Aspergillus nidulans* SUDD protein, an extragenic suppressor of the heat-sensitive bimD6 mutation that fails to attach properly to the spindle microtubules at a restrictive temperature. The specific function of this gene has not yet been determined. [provided by RefSeq, Jul 2008], catalytic activity: ATP + a protein = ADP + a phosphoprotein., similarity: Belongs to the protein kinase superfamily. RIO-type Ser/Thr kinase family., similarity: Contains 1 protein kinase domain., tissue specificity: Widely expressed.,

## Research Area

## Image Data



Western blot analysis of lysates from HepG2 cells, using RIOK3 Antibody. The lane on the right is blocked with the synthesized peptide.



Western blot analysis of the lysates from HeLa cells using RIOK3 antibody.

## Note

For research use only.