

**Product Name: STK32C Rabbit Polyclonal Antibody**  
**Catalog #: APRab18394**



## Summary

<b>Production Name</b>	STK32C Rabbit Polyclonal Antibody
<b>Description</b>	Rabbit Polyclonal Antibody
<b>Host</b>	Rabbit
<b>Application</b>	WB,IHC-P,IF-P,IF-F,ICC/IF,ELISA
<b>Reactivity</b>	Human,Mouse

## Performance

<b>Conjugation</b>	Unconjugated
<b>Modification</b>	Unmodified
<b>Isotype</b>	IgG
<b>Clonality</b>	Polyclonal
<b>Form</b>	Liquid
<b>Storage</b>	Store at 4°C short term. Aliquot and store at -20°C long term. Avoid freeze/thaw cycles.
<b>Buffer</b>	Liquid in PBS containing 50% glycerol, 0.5% BSA and 0.02% New type preservative N.
<b>Purification</b>	Affinity purification

## Immunogen

<b>Gene Name</b>	STK32C
<b>Alternative Names</b>	STK32C; Serine/threonine-protein kinase 32C; PKE; YANK3
<b>Gene ID</b>	282974.0
<b>SwissProt ID</b>	Q86UX6.The antiserum was produced against synthesized peptide derived from human STK32C. AA range:340-389

## Application

<b>Dilution Ratio</b>	WB 1:500-1:2000, IHC-P 1:100-1:300, ELISA 1:5000, IF-P/IF-F/ICC/IF 1:50-200
<b>Molecular Weight</b>	

## Background

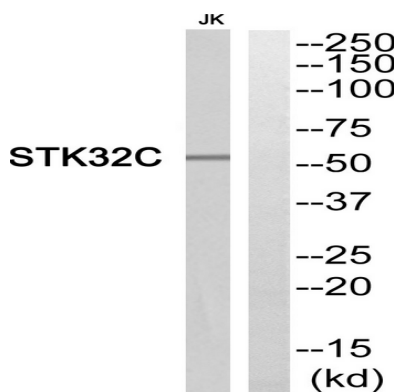
**Product Name: STK32C Rabbit Polyclonal Antibody**  
**Catalog #: APRab18394**



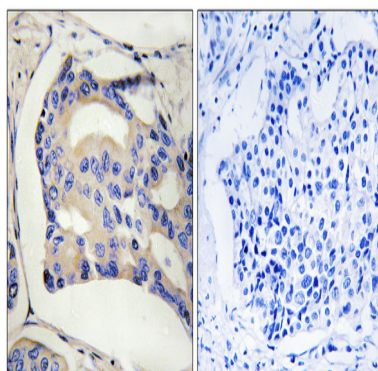
The protein encoded by this gene is a member of the serine/threonine protein kinase family. It is thought that this family member is functional in brain due to its high expression levels there. DNA methylation differences have been found in this gene in monozygotic twins that are discordant for adolescent depression. Alternative splicing results in multiple transcript variants. [provided by RefSeq, Jan 2016], catalytic activity: ATP + a protein = ADP + a phosphoprotein., cofactor: Magnesium., similarity: Belongs to the protein kinase superfamily. Ser/Thr protein kinase family., similarity: Contains 1 protein kinase domain.,

## Research Area

## Image Data



Western blot analysis of STK32C Antibody. The lane on the right is blocked with the STK32C peptide.



Immunohistochemistry analysis of paraffin-embedded human breast cancer, using STK32C Antibody. The picture on the right is blocked with the STK32C peptide.

## Note

For research use only.