

Product Name: Stathmin-3 Rabbit Polyclonal Antibody
Catalog #: AP Rab18372



Summary

Production Name	Stathmin-3 Rabbit Polyclonal Antibody
Description	Rabbit Polyclonal Antibody
Host	Rabbit
Application	WB,ELISA,IHC-P
Reactivity	Human,Mouse,Rat

Performance

Conjugation	Unconjugated
Modification	Unmodified
Isotype	IgG
Clonality	Polyclonal
Form	Liquid
Storage	Store at 4°C short term. Aliquot and store at -20°C long term. Avoid freeze/thaw cycles.
Buffer	Liquid in PBS containing 50% glycerol, 0.5% BSA and 0.02% New type preservative N.
Purification	Affinity purification

Immunogen

Gene Name	STMN3
Alternative Names	STMN3; SCLIP; Stathmin-3; SCG10-like protein
Gene ID	50861.0
SwissProt ID	Q9NZ72.The antiserum was produced against synthesized peptide derived from human STMN3. AA range:61-110

Application

Dilution Ratio	WB 1:500-2000, IHC-P 1:50-300, ELISA 2000-20000
Molecular Weight	22kDa

Background

Product Name: Stathmin-3 Rabbit Polyclonal Antibody
Catalog #: APRab18372

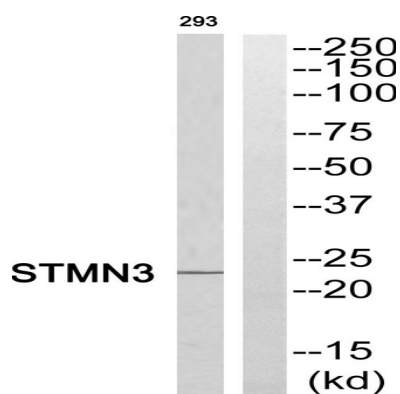


This gene encodes a protein which is a member of the stathmin protein family. Members of this protein family form a complex with tubulins at a ratio of 2 tubulins for each stathmin protein. Microtubules require the ordered assembly of alpha- and beta-tubulins, and formation of a complex with stathmin disrupts microtubule formation and function. A pseudogene of this gene is located on chromosome 22. Alternative splicing results in multiple transcript variants. [provided by RefSeq, Jan 2013],similarity:Belongs to the stathmin family.,tissue specificity:Neuron specific.,

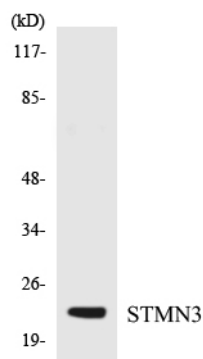
Research Area

Regulation of Microtubule Dynamics

Image Data

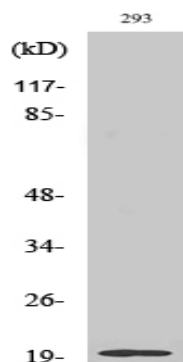


Western blot analysis of STMN3 Antibody. The lane on the right is blocked with the STMN3 peptide.



Western blot analysis of the lysates from K562 cells using STMN3 antibody.

Product Name: Stathmin-3 Rabbit Polyclonal Antibody
Catalog #: APRab18372



Western Blot analysis of various cells using Stathmin-3 Polyclonal Antibody

Note

For research use only.