

## Summary

<b>Production Name</b>	Stat3 Rabbit Polyclonal Antibody
<b>Description</b>	Rabbit Polyclonal Antibody
<b>Host</b>	Rabbit
<b>Application</b>	IF-P,IF-F,ICC/IF,WB,IHC-P,ELISA
<b>Reactivity</b>	Human,Mouse,Rat

## Performance

<b>Conjugation</b>	Unconjugated
<b>Modification</b>	Unmodified
<b>Isotype</b>	IgG
<b>Clonality</b>	Polyclonal
<b>Form</b>	Liquid
<b>Storage</b>	Store at 4°C short term. Aliquot and store at -20°C long term. Avoid freeze/thaw cycles.
<b>Buffer</b>	Liquid in PBS containing 50% glycerol, 0.5% BSA and 0.02% New type preservative N.
<b>Purification</b>	Affinity purification

## Immunogen

<b>Gene Name</b>	STAT3
<b>Alternative Names</b>	STAT3; APRF; Signal transducer and activator of transcription 3; Acute-phase response factor
<b>Gene ID</b>	6774.0
<b>SwissProt ID</b>	P40763.The antiserum was produced against synthesized peptide derived from human STAT3. AA range:672-721

## Application

<b>Dilution Ratio</b>	IF-P/IF-F/ICC/IF 1:50-200, WB 1:500-1:2000, IHC-P 1:100-1:300, ELISA 1:5000.Not yet tested in other applications.
<b>Molecular Weight</b>	88kDa

## Background

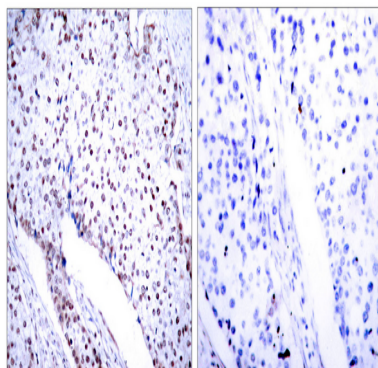
The protein encoded by this gene is a member of the STAT protein family. In response to cytokines and growth factors, STAT family members are phosphorylated by the receptor associated kinases, and then form homo- or heterodimers that translocate to the cell nucleus where they act as transcription activators. This protein is activated through phosphorylation in response to various cytokines and growth factors including IFNs, EGF, IL5, IL6, HGF, LIF and BMP2. This protein mediates the expression of a variety of genes in response to cell stimuli, and thus plays a key role in many cellular processes such as cell growth and apoptosis. The small GTPase Rac1 has been shown to bind and regulate the activity of this protein. PIAS3 protein is a specific inhibitor of this protein. Mutations in this gene are associated with infantile-onset multisystem autoimmune disease and hyperdisease: Defects in STAT3 are the cause of hyperimmunoglobulin E recurrent infection syndrome autosomal dominant (AD-HIES) [MIM:147060]; also known as hyper-IgE syndrome or Job syndrome. AD-HIES is a rare disorder of immunity and connective tissue characterized by immunodeficiency, chronic eczema, recurrent Staphylococcal infections, increased serum IgE, eosinophilia, distinctive coarse facial appearance, abnormal dentition, hyperextensibility of the joints, and bone fractures. function: Transcription factor that binds to the interleukin-6 (IL-6)-responsive elements identified in the promoters of various acute-phase protein genes. Activated by IL31 through IL31RA. miscellaneous: Involved in the gp130-mediated signaling pathway. online information: STAT3 entry, online information: STAT3 mutation db, PTM: Tyrosine phosphorylated in response to IL-6, IL-11, CNTF, LIF, CSF-1, EGF, PDGF, IFN-alpha and OSM. Phosphorylated on serine upon DNA damage, probably by ATM or ATR. Serine phosphorylation is important for the formation of stable DNA-binding STAT3 homodimers and maximal transcriptional activity. similarity: Belongs to the transcription factor STAT family. similarity: Contains 1 SH2 domain. subcellular location: Shuttles between the nucleus and the cytoplasm. Constitutive nuclear presence is independent of tyrosine phosphorylation. subunit: Forms a homodimer or a heterodimer with a related family member (at least STAT1). Interacts with NCOA1, PELP1, SOCS7 and STATIP1. Interacts with HCV core protein. Interacts with IL23R in presence of IL23. Interacts with IL31RA. Interacts with SIPAR. Interacts (via SH2 domain) with NLK (By similarity). Interacts with KPNA4 and KPNA5; KPNA4 may be the primary mediator of nuclear import (By similarity). Interacts with TMF1. tissue specificity: Heart, brain, placenta, lung, liver, skeletal muscle, kidney and pancreas.

## Research Area

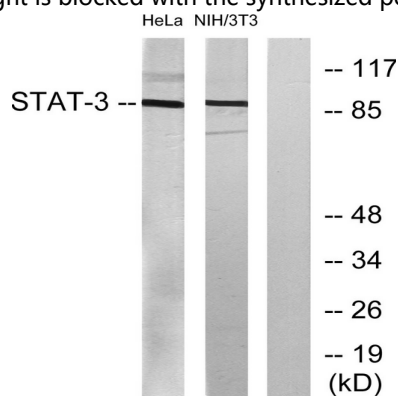
Regulation\_Microtubule; SAPK\_JNK; Stem cell pathway; Protein\_Acetylation

## Image Data

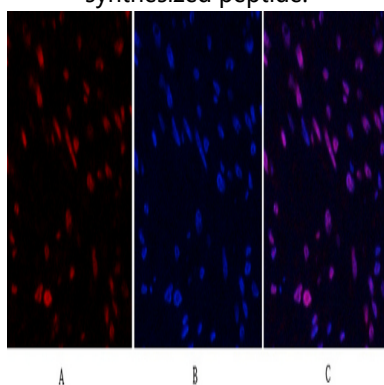
**Product Name: Stat3 Rabbit Polyclonal Antibody**  
**Catalog #: APRab18355**



Immunohistochemistry analysis of paraffin-embedded human breast carcinoma tissue, using STAT3 Antibody. The picture on the right is blocked with the synthesized peptide.

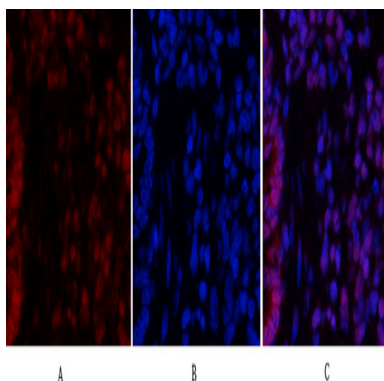


Western blot analysis of lysates from HeLa and 3T3 cells, using STAT3 Antibody. The lane on the right is blocked with the synthesized peptide.

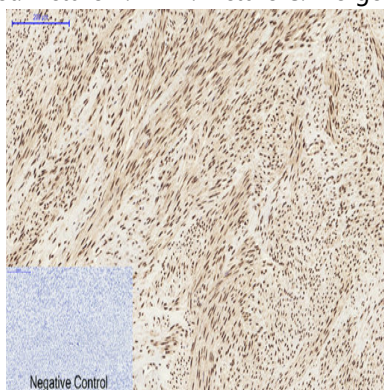


Immunofluorescence analysis of human-uterus tissue. 1, Stat3 Polyclonal Antibody (red) was diluted at 1:200 (4°C, overnight). 2, Cy3 labeled Secondary antibody was diluted at 1:300 (room temperature, 50min). 3, Picture B: DAPI (blue) 10min. Picture A: Target. Picture B: DAPI. Picture C: merge of A+B

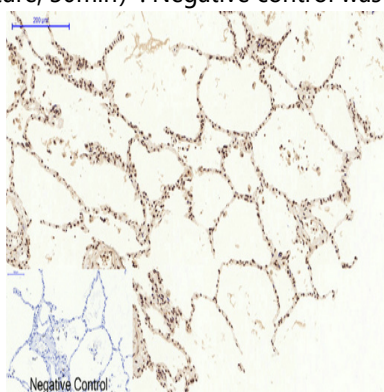
**Product Name: Stat3 Rabbit Polyclonal Antibody**  
**Catalog #: APRab18355**



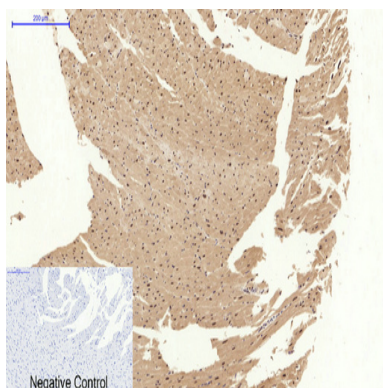
Immunofluorescence analysis of rat-lung tissue. 1, Stat3 Polyclonal Antibody (red) was diluted at 1:200 (4°C, overnight). 2, Cy3 labeled Secondary antibody was diluted at 1:300 (room temperature, 50min). 3, Picture B: DAPI (blue) 10min. Picture A: Target. Picture B: DAPI. Picture C: merge of A+B



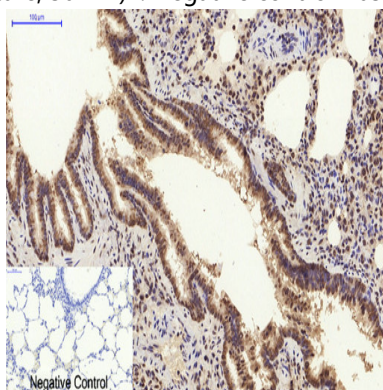
Immunohistochemical analysis of paraffin-embedded Human-uterus tissue. 1, Stat3 Polyclonal Antibody was diluted at 1:200 (4°C, overnight). 2, Sodium citrate pH 6.0 was used for antibody retrieval (>98°C, 20min). 3, Secondary antibody was diluted at 1:200 (room temperature, 30min). Negative control was used by secondary antibody only.



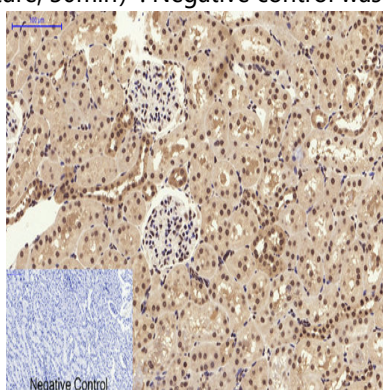
Immunohistochemical analysis of paraffin-embedded Human-lung tissue. 1, Stat3 Polyclonal Antibody was diluted at 1:200 (4°C, overnight). 2, Sodium citrate pH 6.0 was used for antibody retrieval (>98°C, 20min). 3, Secondary antibody was diluted at 1:200 (room temperature, 30min). Negative control was used by secondary antibody only.



Immunohistochemical analysis of paraffin-embedded Rat-heart tissue. 1, Stat3 Polyclonal Antibody was diluted at 1:200 (4°C, overnight) . 2, Sodium citrate pH 6.0 was used for antibody retrieval (>98°C, 20min) . 3, Secondary antibody was diluted at 1:200 (room temperature, 30min) . Negative control was used by secondary antibody only.



Immunohistochemical analysis of paraffin-embedded Rat-lung tissue. 1, Stat3 Polyclonal Antibody was diluted at 1:200 (4°C, overnight) . 2, Sodium citrate pH 6.0 was used for antibody retrieval (>98°C, 20min) . 3, Secondary antibody was diluted at 1:200 (room temperature, 30min) . Negative control was used by secondary antibody only.



Immunohistochemical analysis of paraffin-embedded Rat-kidney tissue. 1, Stat3 Polyclonal Antibody was diluted at 1:200 (4°C, overnight) . 2, Sodium citrate pH 6.0 was used for antibody retrieval (>98°C, 20min) . 3, Secondary antibody was diluted at 1:200 (room temperature, 30min) . Negative control was used by secondary antibody only.

**Product Name: Stat3 Rabbit Polyclonal Antibody**  
**Catalog #: APRab18355**

---



**Note**

For research use only.