

Summary

Production Name	StARD13 Rabbit Polyclonal Antibody
Description	Rabbit Polyclonal Antibody
Host	Rabbit
Application	WB,ELISA,IHC-P
Reactivity	Human,Mouse

Performance

Conjugation	Unconjugated
Modification	Unmodified
Isotype	IgG
Clonality	Polyclonal
Form	Liquid
Storage	Store at 4°C short term. Aliquot and store at -20°C long term. Avoid freeze/thaw cycles.
Buffer	Liquid in PBS containing 50% glycerol, 0.5% BSA and 0.02% New type preservative N.
Purification	Affinity purification

Immunogen

Gene Name	STARD13 STARD13; DLC2; GT650; StAR-related lipid transfer protein 13; 46H23.2; Deleted in liver
Alternative Names	cancer 2 protein; DLC-2; Rho GTPase-activating protein; START domain-containing protein 13; StARD13
Gene ID	90627.0
SwissProt ID	Q9Y3M8.The antiserum was produced against synthesized peptide derived from human STA13. AA range:101-150

Application

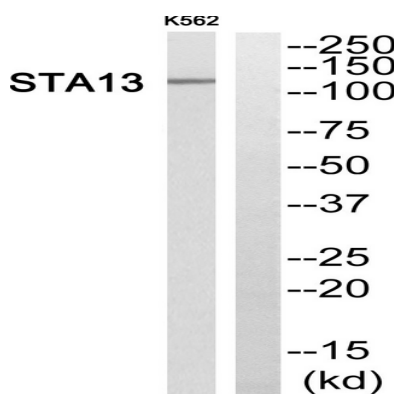
Dilution Ratio	WB 1:500-2000, IHC-P 1:50-300, ELISA 2000-20000
Molecular Weight	125kDa

Background

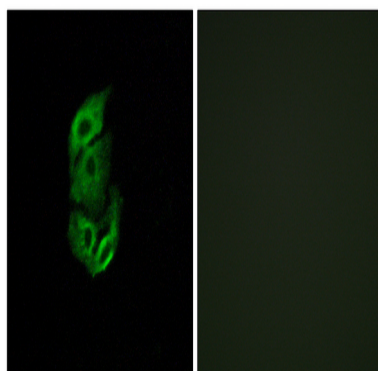
This gene encodes a protein which contains an N-terminal sterile alpha motif (SAM) for protein-protein interactions, followed by an ATP/GTP-binding motif, a GTPase-activating protein (GAP) domain, and a C-terminal STAR-related lipid transfer (START) domain. It may be involved in regulation of cytoskeletal reorganization, cell proliferation, and cell motility, and acts as a tumor suppressor in hepatoma cells. The gene is located in a region of chromosome 13 that is associated with loss of heterozygosity in hepatocellular carcinomas. Alternatively spliced transcript variants encoding different isoforms have been described for this gene. [provided by RefSeq, Aug 2011],function:GTPase-activating protein for RhoA, and perhaps for Cdc42. May be involved in regulation of cytoskeletal reorganization, cell proliferation and cell motility. Acts a tumor suppressor in hepatocellular carcinoma cells.,similarity:Contains 1 Rho-GAP domain.,similarity:Contains 1 SAM (sterile alpha motif) domain.,similarity:Contains 1 START domain.,subunit:Homodimer. Interacts with TAX1BP1.,tissue specificity:Ubiquitously expressed. Underexpressed in hepatocellular carcinoma cells and some breast cancer cell lines.,

Research Area

Image Data



Western blot analysis of STA13 Antibody. The lane on the right is blocked with the STA13 peptide.



Immunofluorescence analysis of A549 cells, using STA13 Antibody. The picture on the right is blocked with the synthesized

Product Name: StARD13 Rabbit Polyclonal Antibody
Catalog #: APRab18342



peptide.

Note

For research use only.