

Product Name: SRp55 Rabbit Polyclonal Antibody
Catalog #: APRab18280



Summary

Production Name	SRp55 Rabbit Polyclonal Antibody
Description	Rabbit Polyclonal Antibody
Host	Rabbit
Application	IHC-P,IF-P,IF-F,ICC/IF,ELISA
Reactivity	Human,Mouse,Rat

Performance

Conjugation	Unconjugated
Modification	Unmodified
Isotype	IgG
Clonality	Polyclonal
Form	Liquid
Storage	Store at 4°C short term. Aliquot and store at -20°C long term. Avoid freeze/thaw cycles.
Buffer	Liquid in PBS containing 50% glycerol, 0.5% BSA and 0.02% New type preservative N.
Purification	Affinity purification

Immunogen

Gene Name	SRSF6
Alternative Names	SRSF6; SFRS6; SRP55; Serine/arginine-rich splicing factor 6; Pre-mRNA-splicing factor SRP55; Splicing factor; arginine/serine-rich 6
Gene ID	6431.0
SwissProt ID	Q13247. Synthesized peptide derived from SRp55 . at AA range: 30-110

Application

Dilution Ratio	IHC-P 1:100-1:300, ELISA 1:20000, IF-P/IF-F/ICC/IF 1:50-200
Molecular Weight	

Background

The protein encoded by this gene is involved in mRNA splicing and may play a role in the determination of alternative

Product Name: SRp55 Rabbit Polyclonal Antibody
Catalog #: APRab18280

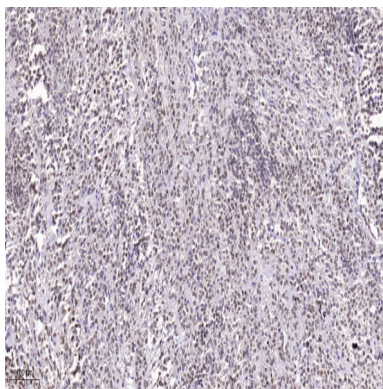


splicing. The encoded nuclear protein belongs to the splicing factor SR family and has been shown to bind with and modulate another member of the family, SFRS12. Alternative splicing results in multiple transcript variants. In addition, two pseudogenes, one on chromosome 17 and the other on the X chromosome, have been found for this gene.[provided by RefSeq, Sep 2010],function:Plays a role in constitutive splicing and can modulate the selection of alternative splice sites.,PTM:Extensively phosphorylated on serine residues in the RS domain.,similarity:Belongs to the splicing factor SR family.,similarity:Contains 2 RRM (RNA recognition motif) domains.,subunit:Binds SFRS12.,

Research Area

Spliceosome;

Image Data



Immunohistochemical analysis of paraffin-embedded human Small intestinal stromal tumor. 1, Tris-EDTA,pH9.0 was used for antigen retrieval. 2 Antibody was diluted at 1:200 (4° overnight.3,Secondary antibody was diluted at 1:200 (room temperature, 45min) .

Note

For research use only.