

**Product Name: SR-7 Rabbit Polyclonal Antibody**  
**Catalog #: APRab18256**



## Summary

<b>Production Name</b>	SR-7 Rabbit Polyclonal Antibody
<b>Description</b>	Rabbit Polyclonal Antibody
<b>Host</b>	Rabbit
<b>Application</b>	IF-P,IF-F,ICC/IF,ELISA
<b>Reactivity</b>	Human,Mouse,Rat

## Performance

<b>Conjugation</b>	Unconjugated
<b>Modification</b>	Unmodified
<b>Isotype</b>	IgG
<b>Clonality</b>	Polyclonal
<b>Form</b>	Liquid
<b>Storage</b>	Store at 4°C short term. Aliquot and store at -20°C long term. Avoid freeze/thaw cycles.
<b>Buffer</b>	Liquid in PBS containing 50% glycerol, 0.5% BSA and 0.02% New type preservative N.
<b>Purification</b>	Affinity purification

## Immunogen

<b>Gene Name</b>	HTR7
<b>Alternative Names</b>	HTR7; 5-hydroxytryptamine receptor 7; 5-HT-7; 5-HT7; 5-HT-X; Serotonin receptor 7
<b>Gene ID</b>	3363.0
<b>SwissProt ID</b>	P34969. The antiserum was produced against synthesized peptide derived from human HTR7. AA range:391-440

## Application

<b>Dilution Ratio</b>	IF-P/IF-F/ICC/IF 1:200-1:1000, ELISA 1:5000. Not yet tested in other applications.
<b>Molecular Weight</b>	

## Background

The neurotransmitter, serotonin, is thought to play a role in various cognitive and behavioral functions. The serotonin

**Product Name: SR-7 Rabbit Polyclonal Antibody**  
**Catalog #: APRab18256**

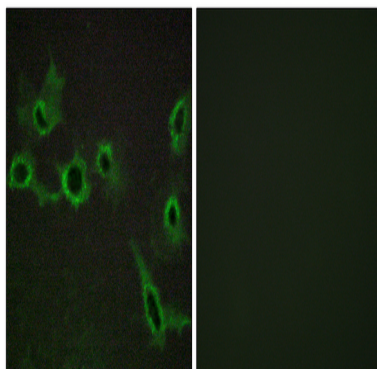


receptor encoded by this gene belongs to the superfamily of G protein-coupled receptors and the gene is a candidate locus for involvement in autistic disorder and other neuropsychiatric disorders. Three splice variants have been identified which encode proteins that differ in the length of their carboxy terminal ends. [provided by RefSeq, Jul 2008], alternative products:Isoform A and isoform B appear to be expressed at higher levels,function:This is one of the several different receptors for 5-hydroxytryptamine (serotonin), a biogenic hormone that functions as a neurotransmitter, a hormone, and a mitogen. The activity of this receptor is mediated by G proteins that stimulate adenylate cyclase.,similarity:Belongs to the G-protein coupled receptor 1 family.,tissue specificity:Isoform A is the predominant isoform in spleen, caudate and hippocampus. Isoform B is expressed at lower levels, and isoform D is a minor isoform.,

## Research Area

Calcium;Neuroactive ligand-receptor interaction;

## Image Data



Immunofluorescence analysis of COS7 cells, using HTR7 Antibody. The picture on the right is blocked with the synthesized peptide.

## Note

For research use only.