

Product Name: SR-1F Rabbit Polyclonal Antibody
Catalog #: APRab18246



Summary

Production Name	SR-1F Rabbit Polyclonal Antibody
Description	Rabbit Polyclonal Antibody
Host	Rabbit
Application	WB,ELISA,IHC-P
Reactivity	Human,Mouse,Rat,Monkey

Performance

Conjugation	Unconjugated
Modification	Unmodified
Isotype	IgG
Clonality	Polyclonal
Form	Liquid
Storage	Store at 4°C short term. Aliquot and store at -20°C long term. Avoid freeze/thaw cycles.
Buffer	Liquid in PBS containing 50% glycerol, 0.5% BSA and 0.02% New type preservative N.
Purification	Affinity purification

Immunogen

Gene Name	HTR1F
Alternative Names	HTR1F; HTR1EL; 5-hydroxytryptamine receptor 1F; 5-HT-1F; 5-HT1F; Serotonin receptor 1F
Gene ID	3355.0
SwissProt ID	P30939.The antiserum was produced against synthesized peptide derived from human 5-HT-1F. AA range:101-150

Application

Dilution Ratio	WB 1:500-2000, IHC-P 1:50-300, ELISA 2000-20000
Molecular Weight	38kDa

Product Name: SR-1F Rabbit Polyclonal Antibody
Catalog #: AP Rab18246



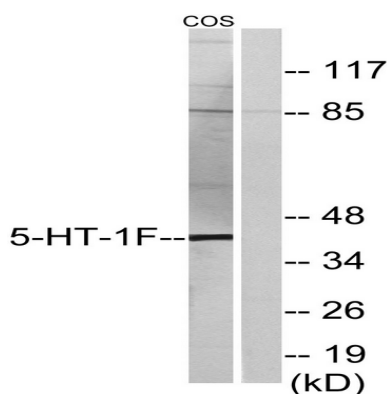
Background

function: This is one of the several different receptors for 5-hydroxytryptamine (serotonin), a biogenic hormone that functions as a neurotransmitter, a hormone, and a mitogen. The activity of this receptor is mediated by G proteins that inhibit adenylate cyclase activity., similarity: Belongs to the G-protein coupled receptor 1 family., function: This is one of the several different receptors for 5-hydroxytryptamine (serotonin), a biogenic hormone that functions as a neurotransmitter, a hormone, and a mitogen. The activity of this receptor is mediated by G proteins that inhibit adenylate cyclase activity., similarity: Belongs to the G-protein coupled receptor 1 family.,

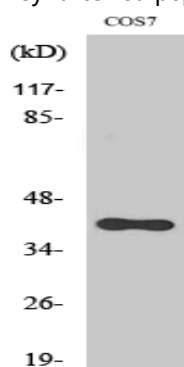
Research Area

Neuroactive ligand-receptor interaction;

Image Data



Western blot analysis of lysates from COS7 cells, using 5-HT-1F Antibody. The lane on the right is blocked with the synthesized peptide.



Western Blot analysis of various cells using SR-1F Polyclonal Antibody diluted at 1 : 1000

Note

For research use only.