

## Summary

<b>Production Name</b>	SR-1B Rabbit Polyclonal Antibody
<b>Description</b>	Rabbit Polyclonal Antibody
<b>Host</b>	Rabbit
<b>Application</b>	WB,IHC-P,IF-P,IF-F,ICC/IF,ELISA
<b>Reactivity</b>	Human,Mouse,Rat

## Performance

<b>Conjugation</b>	Unconjugated
<b>Modification</b>	Unmodified
<b>Isotype</b>	IgG
<b>Clonality</b>	Polyclonal
<b>Form</b>	Liquid
<b>Storage</b>	Store at 4°C short term. Aliquot and store at -20°C long term. Avoid freeze/thaw cycles.
<b>Buffer</b>	Liquid in PBS containing 50% glycerol, 0.5% BSA and 0.02% New type preservative N.
<b>Purification</b>	Affinity purification

## Immunogen

<b>Gene Name</b>	HTR1B
<b>Alternative Names</b>	HTR1B; HTR1DB; 5-hydroxytryptamine receptor 1B; 5-HT-1B; 5-HT1B; S12; Serotonin 1D beta receptor; 5-HT-1D-beta; Serotonin receptor 1B
<b>Gene ID</b>	3351.0
<b>SwissProt ID</b>	P28222.The antiserum was produced against synthesized peptide derived from human 5-HT-1B. AA range:201-250

## Application

<b>Dilution Ratio</b>	WB 1:500-1:2000, IHC-P 1:100-1:300, IF-P/IF-F/ICC/IF 1:200-1:1000, ELISA 1:10000.Not yet tested in other applications.
<b>Molecular Weight</b>	43kDa

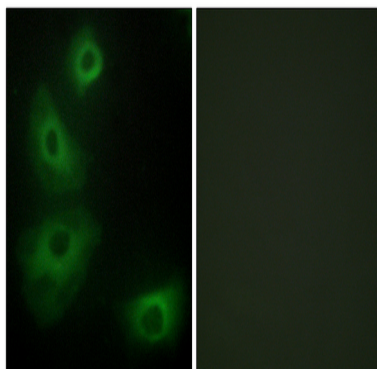
## Background

The protein encoded by this intronless gene is a G-protein coupled receptor for serotonin (5-hydroxytryptamine). Ligand binding activates second messengers that inhibit the activity of adenylate cyclase and manage the release of serotonin, dopamine, and acetylcholine in the brain. The encoded protein may be involved in several neuropsychiatric disorders and therefore is often a target of antidepressant and other psychotherapeutic drugs. [provided by RefSeq, Nov 2015],function:This is one of the several different receptors for 5-hydroxytryptamine (serotonin), a biogenic hormone that functions as a neurotransmitter, a hormone, and a mitogen. The activity of this receptor is mediated by G proteins that inhibit adenylate cyclase activity.,PTM:Palmitoylated.,PTM:Phosphorylated. Desensitization of the receptor may be mediated by its phosphorylation.,similarity:Belongs to the G-protein coupled receptor 1 family.,

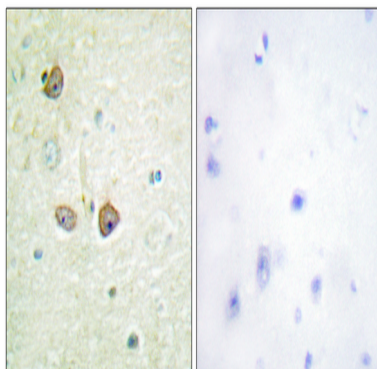
## Research Area

Neuroactive ligand-receptor interaction;

## Image Data

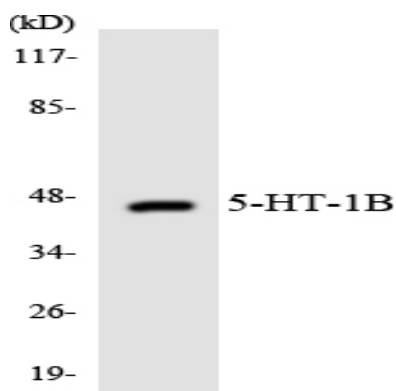


Immunofluorescence analysis of HeLa cells, using 5-HT-1B Antibody. The picture on the right is blocked with the synthesized peptide.



Immunohistochemistry analysis of paraffin-embedded human brain tissue, using 5-HT-1B Antibody. The picture on the right is blocked with the synthesized peptide.

**Product Name: SR-1B Rabbit Polyclonal Antibody**  
**Catalog #: APRab18243**



Western blot analysis of the lysates from HepG2 cells using 5-HT-1B antibody.

### **Note**

For research use only.