

## Summary

<b>Production Name</b>	SPZ1 Rabbit Polyclonal Antibody
<b>Description</b>	Rabbit Polyclonal Antibody
<b>Host</b>	Rabbit
<b>Application</b>	IHC-P,IF-P,IF-F,ICC/IF,WB,ELISA
<b>Reactivity</b>	Human,Rat,Mouse

## Performance

<b>Conjugation</b>	Unconjugated
<b>Modification</b>	Unmodified
<b>Isotype</b>	IgG
<b>Clonality</b>	Polyclonal
<b>Form</b>	Liquid
<b>Storage</b>	Store at 4°C short term. Aliquot and store at -20°C long term. Avoid freeze/thaw cycles.
<b>Buffer</b>	Liquid in PBS containing 50% glycerol, 0.5% BSA and 0.02% New type preservative N.
<b>Purification</b>	Affinity purification

## Immunogen

<b>Gene Name</b>	SPZ1
<b>Alternative Names</b>	SPZ1; TSP1; Spermatogenic leucine zipper protein 1; Testis-specific protein 1; Testis-specific protein NYD-TSP1
<b>Gene ID</b>	84654.0
<b>SwissProt ID</b>	Q9BXG8.The antiserum was produced against synthesized peptide derived from human SPZ1. AA range:111-160

## Application

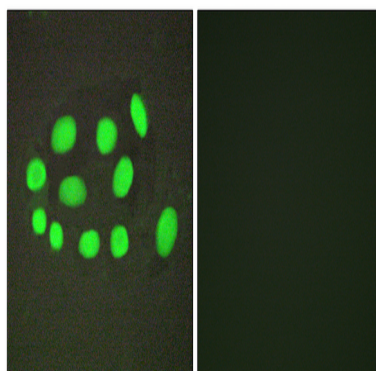
<b>Dilution Ratio</b>	WB 1:500-2000, IHC-P 1:100-1:300, IF-P/IF-F/ICC/IF 1:200-1:1000, ELISA 1:20000.Not yet tested in other applications.
<b>Molecular Weight</b>	133kDa

## Background

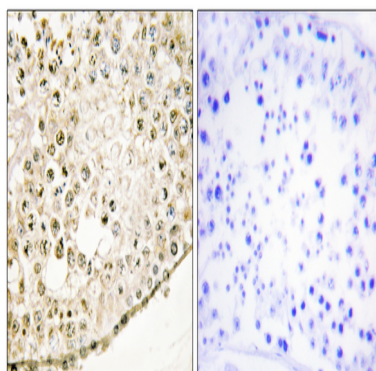
This gene encodes a bHLH-zip transcription factor which functions in the mitogen-activate protein kinase (MAPK) signaling pathway. Because of its role in the upregulation of cell proliferation and tumorigenesis, this gene may serve as a target for Ras-induced tumor treatments. [provided by RefSeq, Oct 2011],function:Transcription factor that binds to the DNA sequence 5'-CANNTG-3'(E box) and the G-box motif. May play an important role in the regulation of cell proliferation and differentiation during spermatogenesis.,PTM:Phosphorylated by ERK1 and ERK2.,similarity:Contains 1 basic helix-loop-helix (bHLH) domain.,subunit:Interacts with PPP1CC isoform gamma-2.,tissue specificity:Specifically and strongly expressed in the testis. Expressed in several tumor cell lines.,

## Research Area

## Image Data



Immunofluorescence analysis of A549 cells, using SPZ1 Antibody. The picture on the right is blocked with the synthesized peptide.



Immunohistochemistry analysis of paraffin-embedded human testis tissue, using SPZ1 Antibody. The picture on the right is blocked with the synthesized peptide.

**Product Name: SPZ1 Rabbit Polyclonal Antibody**  
**Catalog #: APRab18237**

---



**Note**

For research use only.