

Product Name: Spectrin β II Rabbit Polyclonal Antibody
Catalog #: APRab18178



Summary

Production Name	Spectrin β II Rabbit Polyclonal Antibody
Description	Rabbit Polyclonal Antibody
Host	Rabbit
Application	WB,IHC-P,IF-P,IF-F,ICC/IF,ELISA
Reactivity	Human,Mouse,Rat

Performance

Conjugation	Unconjugated
Modification	Unmodified
Isotype	IgG
Clonality	Polyclonal
Form	Liquid
Storage	Store at 4°C short term. Aliquot and store at -20°C long term. Avoid freeze/thaw cycles.
Buffer	Liquid in PBS containing 50% glycerol, 0.5% BSA and 0.02% New type preservative N.
Purification	Affinity purification

Immunogen

Gene Name	SPTBN1
Alternative Names	SPTBN1; SPTB2; Spectrin beta chain; non-erythrocytic 1; Beta-II spectrin; Fodrin beta chain; Spectrin, non-erythroid beta chain 1
Gene ID	6711.0
SwissProt ID	Q01082.The antiserum was produced against synthesized peptide derived from human SPTBN1. AA range:651-700

Application

Dilution Ratio	WB 1:500-1:2000, IHC-P 1:100-1:300, ELISA 1:10000, IF-P/IF-F/ICC/IF 1:50-200
Molecular Weight	275kDa

Product Name: Spectrin β II Rabbit Polyclonal Antibody
Catalog #: AP Rab18178

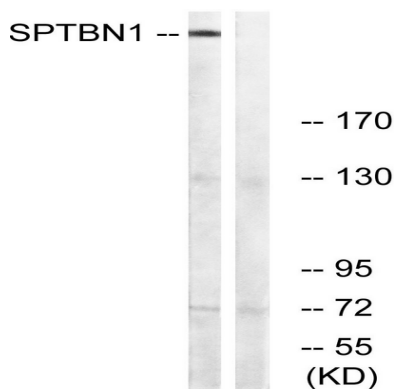


Background

Spectrin is an actin crosslinking and molecular scaffold protein that links the plasma membrane to the actin cytoskeleton, and functions in the determination of cell shape, arrangement of transmembrane proteins, and organization of organelles. It is composed of two antiparallel dimers of alpha- and beta- subunits. This gene is one member of a family of beta-spectrin genes. The encoded protein contains an N-terminal actin-binding domain, and 17 spectrin repeats which are involved in dimer formation. Multiple transcript variants encoding different isoforms have been found for this gene. [provided by RefSeq, Jul 2008],function:Fodrin, which seems to be involved in secretion, interacts with calmodulin in a calcium-dependent manner and is thus candidate for the calcium-dependent movement of the cytoskeleton at the membrane,PTM:Isoform 2 is phosphorylated on Ser-8 and Ser-10.,similarity:Belongs to the spectrin family.,similarity:Contains 1 PH domain.,similarity:Contains 17 spectrin repeats.,similarity:Contains 2 CH (calponin-homology) domains.,subcellular location:Colocalizes with ANK2 in a distinct intracellular compartment of neonatal cardiomyocytes.,subunit:Like erythrocyte spectrin, the spectrin-like proteins are capable to form dimers which can further associate to tetramers. The short form cannot bind to the axonal protein fodaxin. Interacts with ANK2.,tissue specificity:Isoform 2 is present in brain, lung and kidney (at protein level),,

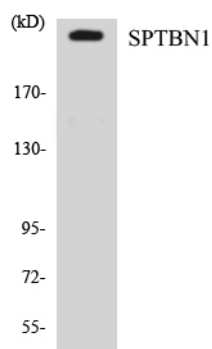
Research Area

Image Data



Western blot analysis of lysates from COLO cells, using SPTBN1 Antibody. The lane on the right is blocked with the synthesized peptide.

Product Name: Spectrin β II Rabbit Polyclonal Antibody
Catalog #: APRab18178



Western blot analysis of the lysates from Jurkat cells using SPTBN1 antibody.

Note

For research use only.