

Summary

Production Name	Snrp116 Rabbit Polyclonal Antibody
Description	Rabbit Polyclonal Antibody
Host	Rabbit
Application	WB,IHC-P,IF-P,IF-F,ICC/IF,ELISA
Reactivity	Human,Mouse

Performance

Conjugation	Unconjugated
Modification	Unmodified
Isotype	IgG
Clonality	Polyclonal
Form	Liquid
Storage	Store at 4°C short term. Aliquot and store at -20°C long term. Avoid freeze/thaw cycles.
Buffer	Liquid in PBS containing 50% glycerol, 0.5% BSA and 0.02% New type preservative N.
Purification	Affinity purification

Immunogen

Gene Name	EFTUD2 EFTUD2; KIAA0031; SNRP116; 116 kDa U5 small nuclear ribonucleoprotein component;
Alternative Names	Elongation factor Tu GTP-binding domain-containing protein 2; SNU114 homolog; hSNU114; U5 snRNP-specific protein; 116 kDa; U5-116 kDa
Gene ID	9343.0
SwissProt ID	Q15029.The antiserum was produced against synthesized peptide derived from human EFTUD2. AA range:321-370

Application

Dilution Ratio	WB 1:500-1:2000, IHC-P 1:100-1:300, ELISA 1:40000, IF-P/IF-F/ICC/IF 1:50-200
Molecular Weight	109kDa

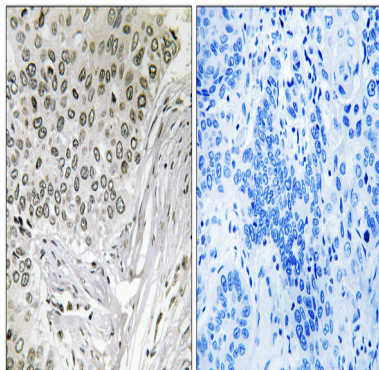
Background

This gene encodes a GTPase which is a component of the spliceosome complex which processes precursor mRNAs to produce mature mRNAs. Mutations in this gene are associated with mandibulofacial dysostosis with microcephaly. Multiple transcript variants encoding different isoforms have been found for this gene. [provided by RefSeq, Apr 2012],function:Component of the U5 snRNP complex required for pre-mRNA splicing.,PTM:Phosphorylated upon DNA damage, probably by ATM or ATR.,similarity:Belongs to the GTP-binding elongation factor family. EF-G/EF-2 subfamily.,subunit:Identified in the spliceosome C complex, at least composed of AQR, ASCC3L1, C19orf29, CDC40, CDC5L, CRNKL1, DDX23, DDX41, DDX48, DDX5, DGCR14, DHX35, DHX38, DHX8, EFTUD2, FRG1, GPATC1, HNRPA1, HNRPA2B1, HNRPA3, HNRPC, HNRPF, HNRPH1, HNRPK, HNRPM, HNRPR, HNRPU, KIAA1160, KIAA1604, LSM2, LSM3, MAGOH, MORG1, PABPC1, PLRG1, PNN, PPIE, PPIL1, PPIL3, PPWD1, PRPF19, PRPF4B, PRPF6, PRPF8, RALY, RBM22, RBM8A, RBMX, SART1, SF3A1, SF3A2, SF3A3, SF3B1, SF3B2, SF3B3, SFRS1, SKIV2L2, SNRPA1, SNRPB, SNRPB2, SNRPD1, SNRPD2, SNRPD3, SNRPE, SNRPF, SNRPG, SNW1, SRRM1, SRRM2, SYF2, SYNCRIP, TFIP11, THOC4, U2AF1, WDR57, XAB2 and ZCCHC8. Binds GTP. Interacts with PRPF8.,

Research Area

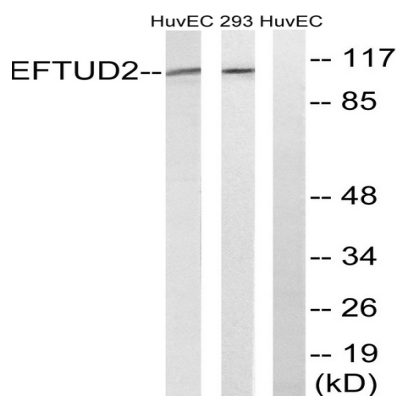
Spliceosome;

Image Data

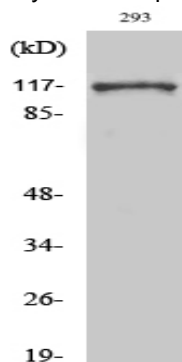


Immunohistochemistry analysis of paraffin-embedded human lung carcinoma tissue, using EFTUD2 Antibody. The picture on the right is blocked with the synthesized peptide.

Product Name: Snrp116 Rabbit Polyclonal Antibody
Catalog #: APRab18064



Western blot analysis of lysates from 293 and HUVEC cells, using EFTUD2 Antibody. The lane on the right is blocked with the synthesized peptide.



Western Blot analysis of various cells using Snrp116 Polyclonal Antibody cells nucleus extracted by Minute TM Cytoplasmic and Nuclear Fractionation kit (SC-003, Inventbiotech, MN, USA) .

Note

For research use only.