

**Product Name: Snk Rabbit Polyclonal Antibody**  
**Catalog #: APRab18056**



## Summary

<b>Production Name</b>	Snk Rabbit Polyclonal Antibody
<b>Description</b>	Rabbit Polyclonal Antibody
<b>Host</b>	Rabbit
<b>Application</b>	WB,IF-P,IF-F,ICC/IF,ELISA,IHC-P
<b>Reactivity</b>	Human,Mouse,Rat

## Performance

<b>Conjugation</b>	Unconjugated
<b>Modification</b>	Unmodified
<b>Isotype</b>	IgG
<b>Clonality</b>	Polyclonal
<b>Form</b>	Liquid
<b>Storage</b>	Store at 4°C short term. Aliquot and store at -20°C long term. Avoid freeze/thaw cycles.
<b>Buffer</b>	Liquid in PBS containing 50% glycerol, 0.5% BSA and 0.02% New type preservative N.
<b>Purification</b>	Affinity purification

## Immunogen

<b>Gene Name</b>	PLK2
<b>Alternative Names</b>	PLK2; SNK; Serine/threonine-protein kinase PLK2; Polo-like kinase 2; PLK-2; hPlk2; Serine/threonine-protein kinase SNK; hSNK; Serum-inducible kinase
<b>Gene ID</b>	10769.0
<b>SwissProt ID</b>	Q9NYY3.The antiserum was produced against synthesized peptide derived from human PLK2. AA range:291-340

## Application

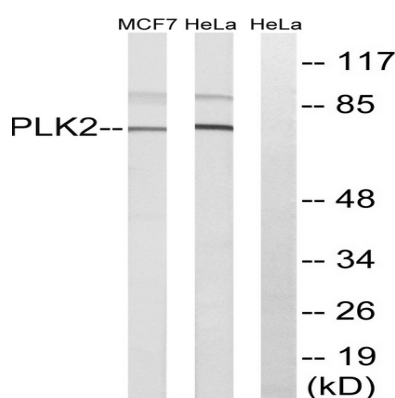
<b>Dilution Ratio</b>	WB 1:500-2000, IF-P/IF-F/ICC/IF/ICC 1:50-200, ELISA 1:2000-20000, IHC-P 1:50-200
<b>Molecular Weight</b>	78kDa

## Background

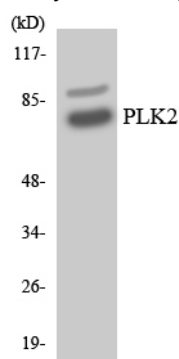
The protein encoded by this gene is a member of the polo family of serine/threonine protein kinases that have a role in normal cell division. This gene is most abundantly expressed in testis, spleen and fetal tissues, and its expression is inducible by serum, suggesting that it may also play an important role in cells undergoing rapid cell division. Alternatively spliced transcript variants encoding different isoforms have been found for this gene. [provided by RefSeq, Nov 2011],catalytic activity:ATP + a protein = ADP + a phosphoprotein.,function:May play a role in the division of at least some cell types, such as fibroblasts, and could function in embryogenesis, wound healing or neoplasia.,similarity:Belongs to the protein kinase superfamily.,similarity:Belongs to the protein kinase superfamily. Ser/Thr protein kinase family. CDC5/Polo subfamily.,similarity:Contains 1 protein kinase domain.,similarity:Contains 2 POLO box domains.,

## Research Area

## Image Data

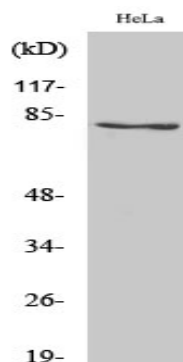


Western blot analysis of lysates from HeLa and MCF-7 cells, using PLK2 Antibody. The lane on the right is blocked with the synthesized peptide.

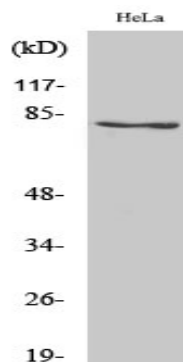


Western blot analysis of the lysates from HeLa cells using PLK2 antibody.

**Product Name: Snk Rabbit Polyclonal Antibody**  
**Catalog #: APRab18056**



Western Blot analysis of various cells using Snk Polyclonal Antibody



Western Blot analysis of MCF7 cells using Snk Polyclonal Antibody

## Note

For research use only.