

Product Name: SMVT Rabbit Polyclonal Antibody
Catalog #: APRab18038



Summary

Production Name	SMVT Rabbit Polyclonal Antibody
Description	Rabbit Polyclonal Antibody
Host	Rabbit
Application	WB,ELISA,IHC-P
Reactivity	Human,Rat,Mouse

Performance

Conjugation	Unconjugated
Modification	Unmodified
Isotype	IgG
Clonality	Polyclonal
Form	Liquid
Storage	Store at 4°C short term. Aliquot and store at -20°C long term. Avoid freeze/thaw cycles.
Buffer	Liquid in PBS containing 50% glycerol, 0.5% BSA and 0.02% New type preservative N.
Purification	Affinity purification

Immunogen

Gene Name	SLC5A6
Alternative Names	SLC5A6; SMVT; Sodium-dependent multivitamin transporter; Na(+)-dependent multivitamin transporter; Solute carrier family 5 member 6
Gene ID	8884.0
SwissProt ID	Q9Y289.The antiserum was produced against synthesized peptide derived from human SLC5A6. AA range:551-600

Application

Dilution Ratio	WB 1:500-2000, IHC-P 1:50-300, ELISA 2000-20000
Molecular Weight	68kDa

Product Name: SMVT Rabbit Polyclonal Antibody
Catalog #: APRab18038

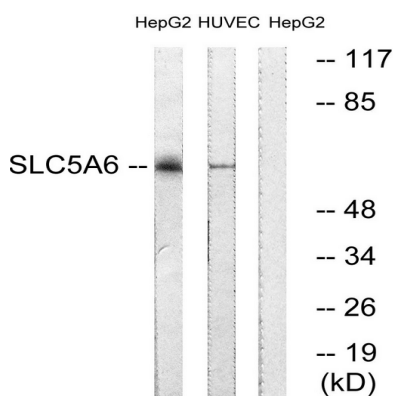


Background

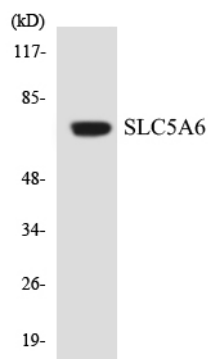
function:Transports pantothenate, biotin and lipoate in the presence of sodium.,similarity:Belongs to the sodium:solute symporter (SSF) (TC 2.A.21) family.,function:Transports pantothenate, biotin and lipoate in the presence of sodium.,similarity:Belongs to the sodium:solute symporter (SSF) (TC 2.A.21) family.,

Research Area

Image Data



Western blot analysis of lysates from HepG2 and HUVEC cells, using SLC5A6 Antibody. The lane on the right is blocked with the synthesized peptide.



Western blot analysis of the lysates from COLO205 cells using SLC5A6 antibody.

Note

For research use only.