

Summary

Production Name	SLU7 Rabbit Polyclonal Antibody
Description	Rabbit Polyclonal Antibody
Host	Rabbit
Application	WB,IHC-P
Reactivity	Human,Mouse,Rat

Performance

Conjugation	Unconjugated
Modification	Unmodified
Isotype	IgG
Clonality	Polyclonal
Form	Liquid
Storage	Store at 4°C short term. Aliquot and store at -20°C long term. Avoid freeze/thaw cycles.
Buffer	Liquid in PBS containing 50% glycerol, 0.5% BSA and 0.02% New type preservative N.
Purification	Affinity purification

Immunogen

Gene Name	SLU7
Alternative Names	SLU7; Pre-mRNA-splicing factor SLU7; hSlu7
Gene ID	10569.0
SwissProt ID	O95391.The antiserum was produced against synthesized peptide derived from human SLU7. AA range:113-162

Application

Dilution Ratio	WB 1:500-2000, IHC-P 1:50-300
Molecular Weight	65kDa

Background

Product Name: SLU7 Rabbit Polyclonal Antibody
Catalog #: AP Rab17983

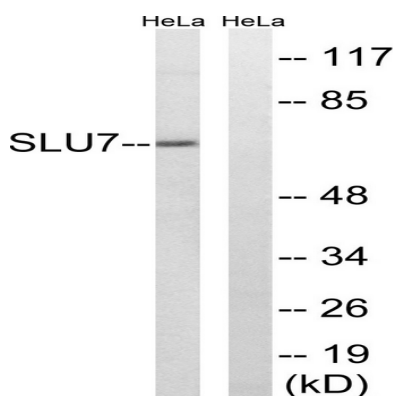


Pre-mRNA splicing occurs in two sequential transesterification steps. The protein encoded by this gene is a splicing factor that has been found to be essential during the second catalytic step in the pre-mRNA splicing process. It associates with the spliceosome and contains a zinc knuckle motif that is found in other splicing factors and is involved in protein-nucleic acid and protein-protein interactions. [provided by RefSeq, Jul 2008],domain:The CCHC-type zinc finger is required to retain the protein within the nucleus and prevent its shuttle back to the cytoplasm via the CRM1 pathway.,function:Participates in the second catalytic step of pre-mRNA splicing, when the free hydroxyl group of exon I attacks the 3'-splice site to generate spliced mRNA and the excised lariat intron. Required for holding exon 1 properly in the spliceosome and for correct AG identification when more than one possible AG exists in 3'-splicing site region. May be involved in the activation of proximal AG. Probably also involved in alternative splicing regulation.,similarity:Belongs to the SLU7 family.,similarity:Contains 1 CCHC-type zinc finger.,subcellular location:Predominantly nuclear. Shuttling between the nucleus and the cytoplasm is regulated by the CCHC-type zinc finger. Upon UV-C stress stimulus, the nuclear concentration of the protein decreases, affecting alternative splicing.,subunit:Component of late spliceosomal complexes. Associates with the spliceosome prior to recognition of the 3'-splice site for step II, probably during catalysis of step I.,

Research Area

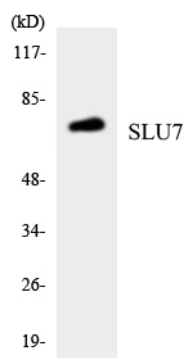
Spliceosome;

Image Data

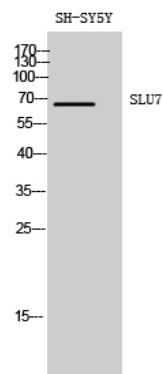


Western blot analysis of lysates from HeLa cells, using SLU7 Antibody. The lane on the right is blocked with the synthesized peptide.

Product Name: SLU7 Rabbit Polyclonal Antibody
Catalog #: APRab17983



Western blot analysis of the lysates from HepG2 cells using SLU7 antibody.



Western Blot analysis of SH-SY5Y cells using SLU7 Polyclonal Antibody diluted at 1: 1000

Note

For research use only.