

Product Name: SLP-76 Rabbit Polyclonal Antibody
Catalog #: APRab17980



Summary

Production Name	SLP-76 Rabbit Polyclonal Antibody
Description	Rabbit Polyclonal Antibody
Host	Rabbit
Application	WB,IHC-P,IF-P,IF-F,ICC/IF,ELISA
Reactivity	Human,Mouse,Rat

Performance

Conjugation	Unconjugated
Modification	Unmodified
Isotype	IgG
Clonality	Polyclonal
Form	Liquid
Storage	Store at 4°C short term. Aliquot and store at -20°C long term. Avoid freeze/thaw cycles.
Buffer	Liquid in PBS containing 50% glycerol, 0.5% BSA and 0.02% New type preservative N.
Purification	Affinity purification

Immunogen

Gene Name	LCP2
Alternative Names	LCP2; Lymphocyte cytosolic protein 2; SH2 domain-containing leukocyte protein of 76 kDa; SLP-76 tyrosine phosphoprotein; SLP76
Gene ID	3937.0
SwissProt ID	Q13094.Synthesized peptide derived from SLP-76 . at AA range: 270-350

Application

Dilution Ratio	WB 1:500-1:2000, IHC-P 1:100-300, ELISA 1:10000, IF-P/IF-F/ICC/IF 1:50-200
Molecular Weight	60kDa

Background

Product Name: SLP-76 Rabbit Polyclonal Antibody
Catalog #: AP Rab17980

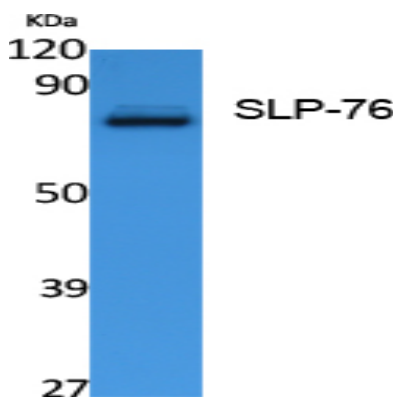


SLP-76 was originally identified as a substrate of the ZAP-70 protein tyrosine kinase following T cell receptor (TCR) ligation in the leukemic T cell line Jurkat. The SLP-76 locus has been localized to human chromosome 5q33 and the gene structure has been partially characterized in mice. The human and murine cDNAs both encode 533 amino acid proteins that are 72% identical and comprised of three modular domains. The NH₂-terminus contains an acidic region that includes a PEST domain and several tyrosine residues which are phosphorylated following TCR ligation. SLP-76 also contains a central proline-rich domain and a COOH-terminal SH2 domain. A number of additional proteins have been identified that associate with SLP-76 both constitutively and inducibly following receptor ligation, supporting the notion that SLP-76 functions as an adaptor or scaffold protein. Studies using SLP-76 deficient T cell lines: The SH2 domain mediates interaction with SHB, function: Involved in T-cell antigen receptor mediated signaling, PTM: Phosphorylated after T-cell receptor activation by ZAP-70, similarity: Contains 1 SAM (sterile alpha motif) domain, similarity: Contains 1 SH2 domain, subunit: Interacts with SLA. Interacts with CBLB (By similarity). Interacts with the adapter proteins GRB2 and FYN. Interacts with SHB. Interacts with PRAM1, tissue specificity: Highly expressed in spleen, thymus, and peripheral blood leukocytes. Highly expressed also in T-cell and monocytic cell lines, expressed at lower level in B-cell lines. Not detected in fibroblast or neuroblastoma cell lines.

Research Area

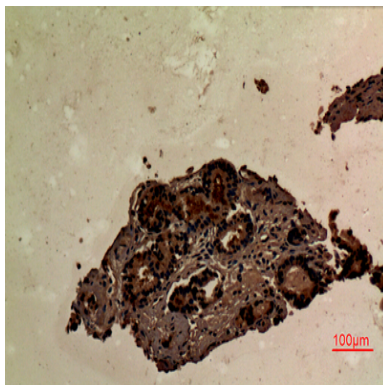
Natural killer cell mediated cytotoxicity; T_Cell_Receptor; Fc epsilon RI;

Image Data



Western Blot analysis of extracts from Jurkat cells, using SLP-76 Polyclonal Antibody.. Secondary antibody was diluted at 1:20000

Product Name: SLP-76 Rabbit Polyclonal Antibody
Catalog #: APRab17980



Immunohistochemical analysis of paraffin-embedded human-prostate-cancer, antibody was diluted at 1:100

Note

For research use only.