

Product Name: SLC6A8 Rabbit Polyclonal Antibody
Catalog #: APRab17963



Summary

Production Name	SLC6A8 Rabbit Polyclonal Antibody
Description	Rabbit Polyclonal Antibody
Host	Rabbit
Application	WB,IHC-P
Reactivity	Human,Mouse,Rat

Performance

Conjugation	Unconjugated
Modification	Unmodified
Isotype	IgG
Clonality	Polyclonal
Form	Liquid
Storage	Store at 4°C short term. Aliquot and store at -20°C long term. Avoid freeze/thaw cycles.
Buffer	Liquid in PBS containing 50% glycerol, 0.5% BSA and 0.02% New type preservative N.
Purification	Affinity purification

Immunogen

Gene Name	SLC6A8
Alternative Names	SLC6A8; Sodium- and chloride-dependent creatine transporter 1; CT1; Creatine transporter 1; Solute carrier family 6 member 8
Gene ID	6535.0
SwissProt ID	P48029.The antiserum was produced against synthesized peptide derived from human SLC6A8. AA range:581-630

Application

Dilution Ratio	WB 1:500-2000, IHC-P 1:50-300
Molecular Weight	70kDa

Product Name: SLC6A8 Rabbit Polyclonal Antibody
Catalog #: AP Rab17963

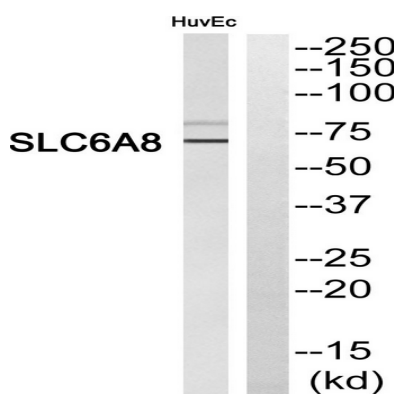


Background

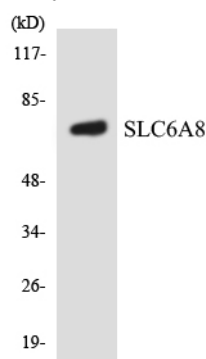
The protein encoded by this gene is a plasma membrane protein whose function is to transport creatine into and out of cells. Defects in this gene can result in X-linked creatine deficiency syndrome. Multiple transcript variants encoding different isoforms have been found for this gene. [provided by RefSeq, Dec 2008],disease:Defects in SLC6A8 are the cause of X-linked creatine deficiency syndrome [MIM:300352]. X-linked creatine deficiency syndrome causes developmental delay, hypotonia, mental retardation, seizures, short stature and midface hypoplasia.,function:Required for the uptake of creatine in muscles and brain.,similarity:Belongs to the sodium:neurotransmitter symporter (SNF) family.,tissue specificity:Predominantly expressed in skeletal muscle and kidney. Also found in brain, heart, colon, testis and prostate.,

Research Area

Image Data



Western blot analysis of SLC6A8 Antibody. The lane on the right is blocked with the SLC6A8 peptide.



Western blot analysis of the lysates from HUVEC cells using SLC6A8 antibody.

Product Name: SLC6A8 Rabbit Polyclonal Antibody
Catalog #: APRab17963



Western Blot analysis of various cells using SLC6A8 Polyclonal Antibody

Note

For research use only.