

Product Name: SLC43A1 Rabbit Polyclonal Antibody
Catalog #: AP Rab17958



Summary

Production Name	SLC43A1 Rabbit Polyclonal Antibody
Description	Rabbit Polyclonal Antibody
Host	Rabbit
Application	WB,ELISA,IHC-P
Reactivity	Human,Rat,Mouse

Performance

Conjugation	Unconjugated
Modification	Unmodified
Isotype	IgG
Clonality	Polyclonal
Form	Liquid
Storage	Store at 4°C short term. Aliquot and store at -20°C long term. Avoid freeze/thaw cycles.
Buffer	Liquid in PBS containing 50% glycerol, 0.5% BSA and 0.02% New type preservative N.
Purification	Affinity purification

Immunogen

Gene Name	SLC43A1
Alternative Names	SLC43A1; LAT3; PB39; POV1; Large neutral amino acids transporter small subunit 3; L-type amino acid transporter 3; Prostate cancer overexpressed gene 1 protein; Solute carrier family 43 member 1
Gene ID	8501.0
SwissProt ID	O75387.The antiserum was produced against synthesized peptide derived from human LAT3. AA range:231-280

Application

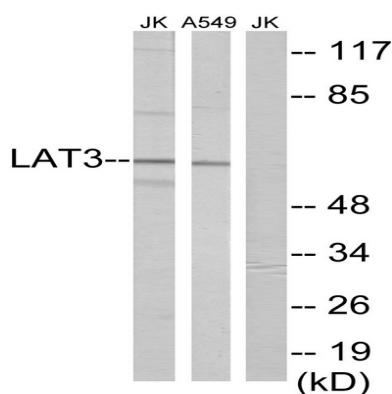
Dilution Ratio	WB 1:500-2000, IHC-P 1:50-300, ELISA 2000-20000
Molecular Weight	61kDa

Background

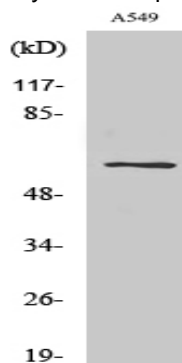
SLC43A1 belongs to the system L family of plasma membrane carrier proteins that transports large neutral amino acids (Babu et al., 2003 [PubMed 12930836]).[supplied by OMIM, Mar 2008],function:Sodium-independent, high affinity transport of large neutral amino acids. Has narrower substrate selectivity compared to SLC7A5 and SLC7A8 and mainly transports branched-chain amino acids and phenylalanine. Plays a role in the development of human prostate cancer, from prostatic intraepithelial neoplasia to invasive prostate cancer.,miscellaneous:Up-regulated in early prostate cancer development with highest expression level in seminomas of testicular germ cell tumors.,similarity:Belongs to the SLC43A transporter (TC 2.A.1.44) family.,tissue specificity:In adults, found in all tissues examined with highest expression in pancreas. In fetus, highest expression in liver and lower levels in kidney, and lung. High levels found in prostate cancer cells.,

Research Area

Image Data



Western blot analysis of lysates from A549 and Jurkat cells, using LAT3 Antibody. The lane on the right is blocked with the synthesized peptide.



Western Blot analysis of various cells using SLC43A1 Polyclonal Antibody

Product Name: SLC43A1 Rabbit Polyclonal Antibody
Catalog #: APRab17958



Note

For research use only.