

**Product Name: SLAM Rabbit Polyclonal Antibody**  
**Catalog #: APRab17947**



## Summary

<b>Production Name</b>	SLAM Rabbit Polyclonal Antibody
<b>Description</b>	Rabbit Polyclonal Antibody
<b>Host</b>	Rabbit
<b>Application</b>	WB,IHC-P,IF-P,IF-F,ICC/IF,ELISA
<b>Reactivity</b>	Human,Rat,Mouse

## Performance

<b>Conjugation</b>	Unconjugated
<b>Modification</b>	Unmodified
<b>Isotype</b>	IgG
<b>Clonality</b>	Polyclonal
<b>Form</b>	Liquid
<b>Storage</b>	Store at 4°C short term. Aliquot and store at -20°C long term. Avoid freeze/thaw cycles.
<b>Buffer</b>	Liquid in PBS containing 50% glycerol, 0.5% BSA and 0.02% New type preservative N.
<b>Purification</b>	Affinity purification

## Immunogen

<b>Gene Name</b>	SLAMF1
<b>Alternative Names</b>	SLAMF1; SLAM; Signaling lymphocytic activation molecule; CDw150; IPO-3; CD150
<b>Gene ID</b>	6504.0
<b>SwissProt ID</b>	Q13291.The antiserum was produced against synthesized peptide derived from the Internal region of human SLAMF1. AA range:81-130

## Application

<b>Dilution Ratio</b>	WB 1:500-1:2000, IHC-P 1:100-300, ELISA 1:20000, IF-P/IF-F/ICC/IF 1:50-200
<b>Molecular Weight</b>	37kDa

## Background

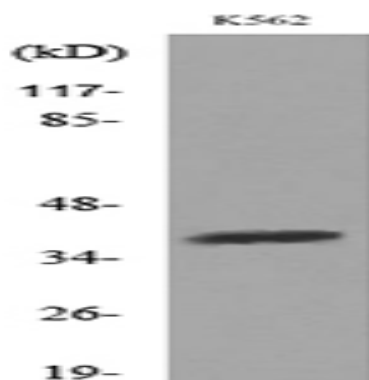
**Product Name: SLAM Rabbit Polyclonal Antibody**  
**Catalog #: APRab17947**



domain: The most membrane-proximal SH2-binding motif interacts with SH2 domain of SH2D1A and does not need to be phosphorylated on tyrosine residues., function: High-affinity self-ligand important in bidirectional T-cell to B-cell stimulation. SLAM-induced signal-transduction events in T-lymphocytes are different from those in B-cells. Two modes of SLAM signaling are likely to exist: one in which the inhibitor SH2D1A acts as a negative regulator and another in which protein-tyrosine phosphatase 2C (PTPN11)-dependent signal transduction operates., PTM: Phosphorylated by FYN., similarity: Contains 1 Ig-like C2-type (immunoglobulin-like) domain., similarity: Contains 1 Ig-like V-type (immunoglobulin-like) domain., subcellular location: Present on the surface of B-cells and T-cells., subunit: Its cytoplasmic domain interacts with SH2 domain protein 1A (SH2D1A), and with PTPN11. Interacts with INPP5D/SHIP1. Binds to Measles virus HN protein and acts as a receptor for this virus., tissue specificity: Constitutively expressed on peripheral blood memory T-cells, T-cell clones, immature thymocytes, and a proportion of B-cells, and is rapidly induced on naive T-cells after activation., domain: The most membrane-proximal SH2-binding motif interacts with SH2 domain of SH2D1A and does not need to be phosphorylated on tyrosine residues., function: High-affinity self-ligand important in bidirectional T-cell to B-cell stimulation. SLAM-induced signal-transduction events in T-lymphocytes are different from those in B-cells. Two modes of SLAM signaling are likely to exist: one in which the inhibitor SH2D1A acts as a negative regulator and another in which protein-tyrosine phosphatase 2C (PTPN11)-dependent signal transduction operates., PTM: Phosphorylated by FYN., similarity: Contains 1 Ig-like C2-type (immunoglobulin-like) domain., similarity: Contains 1 Ig-like V-type (immunoglobulin-like) domain., subcellular location: Present on the surface of B-cells and T-cells., subunit: Its cytoplasmic domain interacts with SH2 domain protein 1A (SH2D1A), and with PTPN11. Interacts with INPP5D/SHIP1. Binds to Measles virus HN protein and acts as a receptor for this virus., tissue specificity: Constitutively expressed on peripheral blood memory T-cells, T-cell clones, immature thymocytes, and a proportion of B-cells, and is rapidly induced on naive T-cells after activation.,

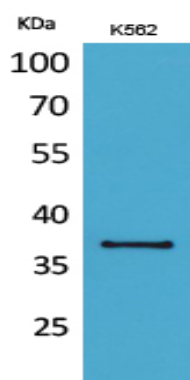
## Research Area

## Image Data

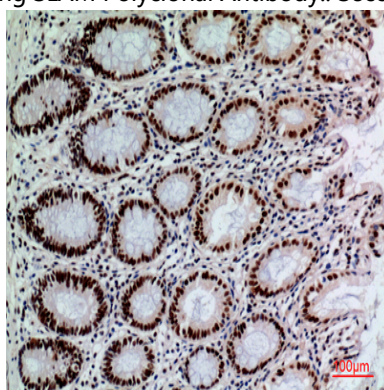


Western blot analysis of lysate from K562 cells, using SLAMF1 Antibody.

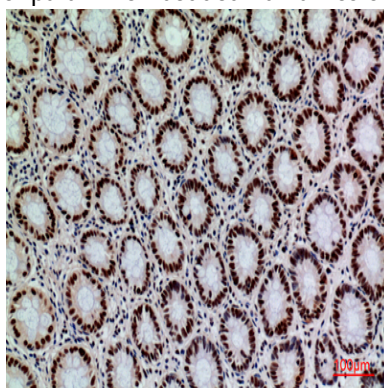
**Product Name: SLAM Rabbit Polyclonal Antibody**  
**Catalog #: APRab17947**



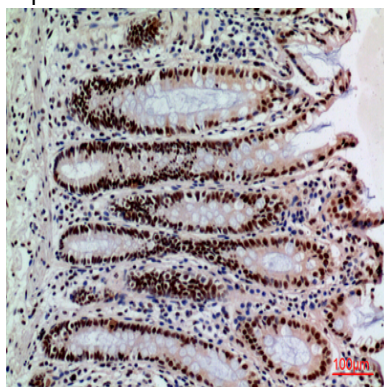
Western Blot analysis of K562 cells using SLAM Polyclonal Antibody.. Secondary antibody was diluted at 1:20000



Immunohistochemical analysis of paraffin-embedded human-colon, antibody was diluted at 1:100



Immunohistochemical analysis of paraffin-embedded human-colon, antibody was diluted at 1:100



**Product Name: SLAM Rabbit Polyclonal Antibody**  
**Catalog #: APRab17947**



---

Immunohistochemical analysis of paraffin-embedded human-colon, antibody was diluted at 1:100

**Note**

For research use only.