

**Product Name: SGLT-2 Rabbit Polyclonal Antibody**  
**Catalog #: APRab17825**



## Summary

<b>Production Name</b>	SGLT-2 Rabbit Polyclonal Antibody
<b>Description</b>	Rabbit Polyclonal Antibody
<b>Host</b>	Rabbit
<b>Application</b>	WB,IHC-P
<b>Reactivity</b>	Human,Mouse,Rat

## Performance

<b>Conjugation</b>	Unconjugated
<b>Modification</b>	Unmodified
<b>Isotype</b>	IgG
<b>Clonality</b>	Polyclonal
<b>Form</b>	Liquid
<b>Storage</b>	Store at 4°C short term. Aliquot and store at -20°C long term. Avoid freeze/thaw cycles.
<b>Buffer</b>	Liquid in PBS containing 50% glycerol, 0.5% BSA and 0.02% New type preservative N.
<b>Purification</b>	Affinity purification

## Immunogen

<b>Gene Name</b>	SLC5A2
<b>Alternative Names</b>	SLC5A2; SGLT2; Sodium/glucose cotransporter 2; Na(+)/glucose cotransporter 2; Low affinity sodium-glucose cotransporter; Solute carrier family 5 member 2
<b>Gene ID</b>	6524.0
<b>SwissProt ID</b>	P31639.The antiserum was produced against synthesized peptide derived from human SLC5A2. AA range:101-150

## Application

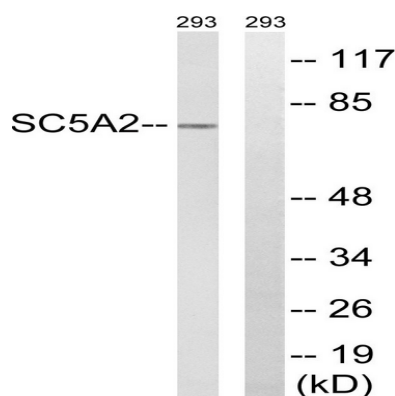
<b>Dilution Ratio</b>	WB 1:500-2000, IHC-P 1:50-300
<b>Molecular Weight</b>	73kDa

## Background

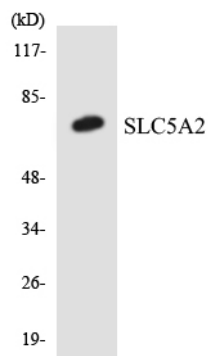
This gene encodes a member of the sodium glucose cotransporter family which are sodium-dependent glucose transport proteins. The encoded protein is the major cotransporter involved in glucose reabsorption in the kidney. Mutations in this gene are associated with renal glucosuria. Two transcript variants, one protein-coding and one not, have been found for this gene. [provided by RefSeq, Feb 2015], disease: Defects in SLC5A2 are the cause of renal glucosuria (GLYS1) [MIM:233100]. GLYS1 is an autosomal recessive disorder characterized by a normal fasting serum glucose concentration and persistent isolated glucosuria, with a normal glucose tolerance test., function: Efficient substrate transport in mammalian kidney is provided by the concerted action of a low affinity high capacity and a high affinity low capacity Na(+)/glucose cotransporter arranged in series along kidney proximal tubules., function: Sodium-dependent glucose transporter. Has a Na(+) to glucose coupling ratio of 1:1., similarity: Belongs to the sodium:solute symporter (SSF) (TC 2.A.21) family.,

## Research Area

## Image Data



Western blot analysis of lysates from 293 cells, using SLC5A2 Antibody. The lane on the right is blocked with the synthesized peptide.



Western blot analysis of the lysates from Jurkat cells using SLC5A2 antibody.

**Product Name: SGLT-2 Rabbit Polyclonal Antibody**  
**Catalog #: APRab17825**

---



**Note**

For research use only.