

Product Name: Sg III Rabbit Polyclonal Antibody
Catalog #: APRab17807



Summary

Production Name	Sg III Rabbit Polyclonal Antibody
Description	Rabbit Polyclonal Antibody
Host	Rabbit
Application	WB,IHC-P,IF-P,IF-F,ICC/IF,ELISA
Reactivity	Human,Rat

Performance

Conjugation	Unconjugated
Modification	Unmodified
Isotype	IgG
Clonality	Polyclonal
Form	Liquid
Storage	Store at 4°C short term. Aliquot and store at -20°C long term. Avoid freeze/thaw cycles.
Buffer	Liquid in PBS containing 50% glycerol, 0.5% BSA and 0.02% New type preservative N.
Purification	Affinity purification

Immunogen

Gene Name	SCG3
Alternative Names	SCG3; Secretogranin-3; Secretogranin III; SgIII
Gene ID	29106.0
SwissProt ID	Q8WXD2.The antiserum was produced against synthesized peptide derived from the N-terminal region of human SCG3. AA range:21-70

Application

Dilution Ratio	WB 1:500-1:2000, IHC-P 1:100-300, ELISA 1:20000, IF-P/IF-F/ICC/IF 1:50-200
Molecular Weight	53kDa

Background

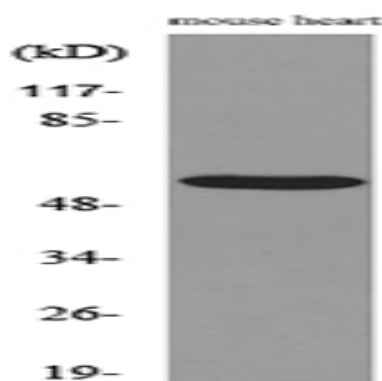
Product Name: Sg III Rabbit Polyclonal Antibody
Catalog #: APRab17807



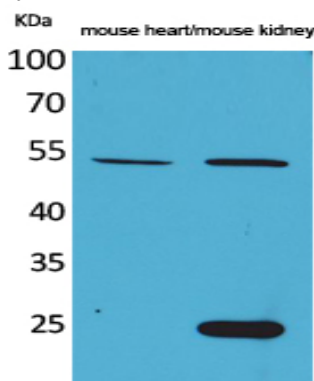
secretogranin III(SCG3) Homo sapiens The protein encoded by this gene is a member of the chromogranin/secretogranin family of neuroendocrine secretory proteins. Granins may serve as precursors for biologically active peptides. Some granins have been shown to function as helper proteins in sorting and proteolytic processing of prohormones; however, the function of this protein is unknown. Two transcript variants encoding different isoforms have been found for this gene. [provided by RefSeq, Sep 2009],subcellular location:Neuroendocrine and endocrine secretory granules.,tissue specificity:Expressed in brain, heart, kidney, liver and skeletal muscle.,

Research Area

Image Data

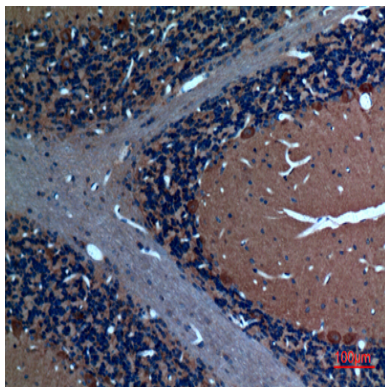


Western blot analysis of lysate from mouse heart cells, using SCG3 Antibody.

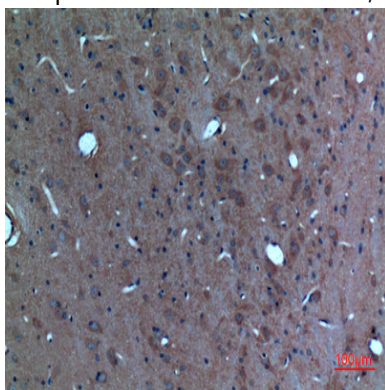


Western Blot analysis of mouse heart, mouse kidney cells using Sg III Polyclonal Antibody.. Secondary antibody was diluted at 1:20000

Product Name: Sg III Rabbit Polyclonal Antibody
Catalog #: APRab17807



Immunohistochemical analysis of paraffin-embedded rat-brain, antibody was diluted at 1:100



Immunohistochemical analysis of paraffin-embedded rat-brain, antibody was diluted at 1:100

Note

For research use only.