

Product Name: SFRS14 Rabbit Polyclonal Antibody
Catalog #: APRab17798



Summary

Production Name	SFRS14 Rabbit Polyclonal Antibody
Description	Rabbit Polyclonal Antibody
Host	Rabbit
Application	WB,ELISA,IHC-P
Reactivity	Human,Rat,Mouse

Performance

Conjugation	Unconjugated
Modification	Unmodified
Isotype	IgG
Clonality	Polyclonal
Form	Liquid
Storage	Store at 4°C short term. Aliquot and store at -20°C long term. Avoid freeze/thaw cycles.
Buffer	Liquid in PBS containing 50% glycerol, 0.5% BSA and 0.02% New type preservative N.
Purification	Affinity purification

Immunogen

Gene Name	SUGP2
Alternative Names	SUGP2; KIAA0365; SFRS14; SURP and G-patch domain-containing protein 2; Arginine/serine-rich-splicing factor 14; Splicing factor; arginine/serine-rich 14
Gene ID	10147.0
SwissProt ID	Q8IX01.Synthesized peptide derived from SFRS14 . at AA range: 260-340

Application

Dilution Ratio	WB 1:500-2000, IHC-P 1:50-300, ELISA 2000-20000
Molecular Weight	120kDa

Background

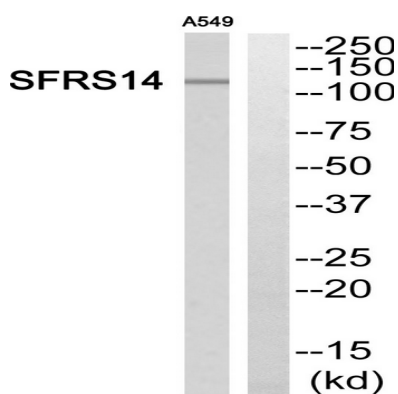
Product Name: SFRS14 Rabbit Polyclonal Antibody
Catalog #: APRab17798



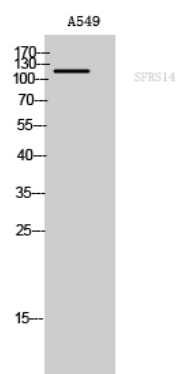
This gene encodes a member of the arginine/serine-rich family of splicing factors. The encoded protein functions in mRNA processing. Alternatively spliced transcript variants have been described. [provided by RefSeq, Feb 2009],function:May play a role in mRNA splicing .,PTM:Phosphorylated upon DNA damage, probably by ATM or ATR.,similarity:Contains 1 G-patch domain.,similarity:Contains 2 SURP motif repeats.,tissue specificity:Detected in adult testis, and in fetal brain and kidney.,

Research Area

Image Data



Western blot analysis of SFRS14 Antibody. The lane on the right is blocked with the SFRS14 peptide.



Western Blot analysis of A549 cells using SFRS14 Polyclonal Antibody cells nucleus extracted by Minute TM Cytoplasmic and Nuclear Fractionation kit (SC-003, Invent biotech, MN, USA) .

Note

For research use only.