

Product Name: Septin 2 Rabbit Polyclonal Antibody
Catalog #: APRab17740



Summary

Production Name	Septin 2 Rabbit Polyclonal Antibody
Description	Rabbit Polyclonal Antibody
Host	Rabbit
Application	WB,IHC-P
Reactivity	Human,Mouse,Rat

Performance

Conjugation	Unconjugated
Modification	Unmodified
Isotype	IgG
Clonality	Polyclonal
Form	Liquid
Storage	Store at 4°C short term. Aliquot and store at -20°C long term. Avoid freeze/thaw cycles.
Buffer	Liquid in PBS containing 50% glycerol, 0.5% BSA and 0.02% New type preservative N.
Purification	Affinity purification

Immunogen

Gene Name	SEPT2
Alternative Names	SEPT2; DIFF6; KIAA0158; NEDD5; Septin-2; Neural precursor cell expressed developmentally down-regulated protein 5; NEDD-5
Gene ID	4735.0
SwissProt ID	Q15019.The antiserum was produced against synthesized peptide derived from human SEPT2. AA range:103-152

Application

Dilution Ratio	WB 1:500-2000, IHC-P 1:50-300
Molecular Weight	41kDa

Product Name: Septin 2 Rabbit Polyclonal Antibody
Catalog #: APRab17740

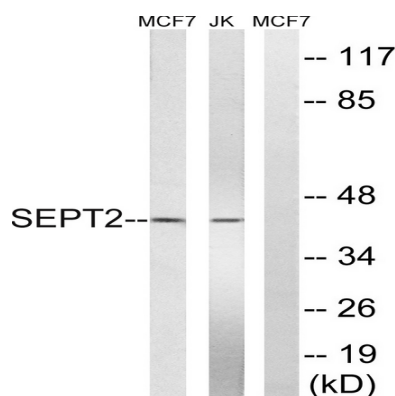


Background

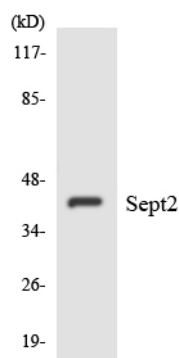
function: Required for normal progress through mitosis. Involved in cytokinesis., similarity: Belongs to the septin family., subcellular location: Accumulates near the contractile ring from anaphase through telophase, and finally condenses into the midbody. In interphase and postmitotic cells, localised to fibrous or granular structures, depending on the growth state of the cell., subunit: Monomer, and homodimer. Nucleotide binding promotes dimerization. Heterohexamer composed of two heterotrimers containing one copy each of SEPT2, SEPT6 and SEPT7. The asymmetrical heterotrimers associate head-to-head to form a hexameric unit that assembles into filaments., function: Required for normal progress through mitosis. Involved in cytokinesis., similarity: Belongs to the septin family., subcellular location: Accumulates near the contractile ring from anaphase through telophase, and finally condenses into the midbody. In interphase and postmitotic cells, localised to fibrous or granular structures, depending on the growth state of the cell., subunit: Monomer, and homodimer. Nucleotide binding promotes dimerization. Heterohexamer composed of two heterotrimers containing one copy each of SEPT2, SEPT6 and SEPT7. The asymmetrical heterotrimers associate head-to-head to form a hexameric unit that assembles into filaments.,

Research Area

Image Data



Western blot analysis of lysates from Jurkat and MCF-7 cells, using SEPT2 Antibody. The lane on the right is blocked with the synthesized peptide.



Product Name: Septin 2 Rabbit Polyclonal Antibody
Catalog #: APRab17740



Western blot analysis of the lysates from HepG2 cells using SEPT2 antibody.

Note

For research use only.