

Summary

Production Name	Seprase Rabbit Polyclonal Antibody
Description	Rabbit Polyclonal Antibody
Host	Rabbit
Application	WB,IHC-P,IF-P,IF-F,ICC/IF,ELISA
Reactivity	Human,Mouse,Rat

Performance

Conjugation	Unconjugated
Modification	Unmodified
Isotype	IgG
Clonality	Polyclonal
Form	Liquid
Storage	Store at 4°C short term. Aliquot and store at -20°C long term. Avoid freeze/thaw cycles.
Buffer	Liquid in PBS containing 50% glycerol, 0.5% BSA and 0.02% New type preservative N.
Purification	Affinity purification

Immunogen

Gene Name	FAP
Alternative Names	FAP; Seprase; 170 kDa melanoma membrane-bound gelatinase; Fibroblast activation protein alpha; Integral membrane serine protease
Gene ID	2191.0
SwissProt ID	Q12884.The antiserum was produced against synthesized peptide derived from human FAP-1. AA range:331-380

Application

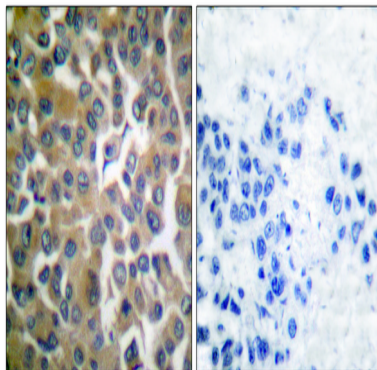
Dilution Ratio	WB 1:500-1:2000, IHC-P 1:100-300, ELISA 1:20000, IF-P/IF-F/ICC/IF 1:100-300, Not yet tested in other applications.
Molecular Weight	90kDa

Background

The protein encoded by this gene is a homodimeric integral membrane gelatinase belonging to the serine protease family. It is selectively expressed in reactive stromal fibroblasts of epithelial cancers, granulation tissue of healing wounds, and malignant cells of bone and soft tissue sarcomas. This protein is thought to be involved in the control of fibroblast growth or epithelial-mesenchymal interactions during development, tissue repair, and epithelial carcinogenesis. Alternatively spliced transcript variants encoding different isoforms have been found for this gene. [provided by RefSeq, Apr 2014],catalytic activity:Degrades gelatin and heat-denatured type I and type IV collagen, but not native type I or type IV collagen. Does not cleave laminin, fibronectin, fibrin or casein.,function:May have a role in tissue remodeling during development and wound healing, and may contribute to invasiveness in malignant cancers.,induction:In fibroblasts at times and sites of tissue remodeling during development, tissue repair, and carcinogenesis.,PTM:N-glycosylated.,PTM:The N-terminus may be blocked.,similarity:Belongs to the peptidase S9B family.,subcellular location:Found in cell surface lamellipodia, invadopodia and on shed vesicles.,subunit:Homodimer, or heterodimer with DPP4. The monomer is inactive.,tissue specificity:Fibroblast specific.,

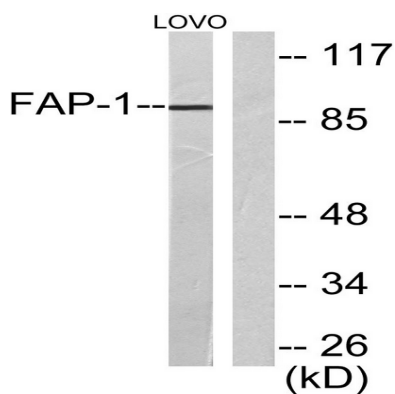
Research Area

Image Data

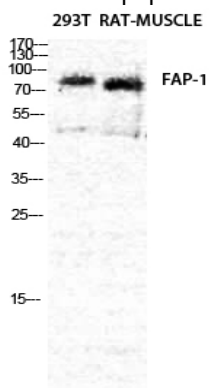


Immunohistochemistry analysis of paraffin-embedded human breast carcinoma tissue, using FAP-1 Antibody. The picture on the right is blocked with the synthesized peptide.

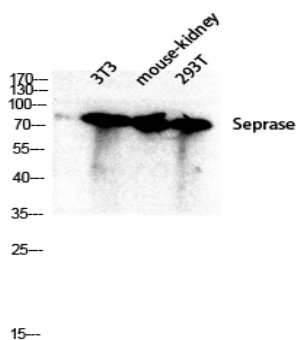
Product Name: Seprase Rabbit Polyclonal Antibody
Catalog #: APRab17735



Western blot analysis of lysates from LOVO cells, using FAP-1 Antibody. The lane on the right is blocked with the synthesized peptide.



Western Blot analysis of RAT-MUSCLE 293T cells using Seprase Polyclonal Antibody diluted at 1: 2000



Western blot analysis of 3T3 mouse-kidney 293T lysis using Seprase antibody. Antibody was diluted at 1:2000

Note

For research use only.