

Product Name: Sec23B Rabbit Polyclonal Antibody
Catalog #: APRab17692



Summary

Production Name	Sec23B Rabbit Polyclonal Antibody
Description	Rabbit Polyclonal Antibody
Host	Rabbit
Application	WB,ELISA,IHC-P
Reactivity	Human,Mouse

Performance

Conjugation	Unconjugated
Modification	Unmodified
Isotype	IgG
Clonality	Polyclonal
Form	Liquid
Storage	Store at 4°C short term. Aliquot and store at -20°C long term. Avoid freeze/thaw cycles.
Buffer	Liquid in PBS containing 50% glycerol, 0.5% BSA and 0.02% New type preservative N.
Purification	Affinity purification

Immunogen

Gene Name	SEC23B
Alternative Names	SEC23B; Protein transport protein Sec23B; SEC23-related protein B
Gene ID	10483.0
SwissProt ID	Q15437.The antiserum was produced against synthesized peptide derived from human Sec23B. AA range:495-544

Application

Dilution Ratio	WB 1:500-2000, IHC-P 1:50-300, ELISA 2000-20000
Molecular Weight	86kDa

Background

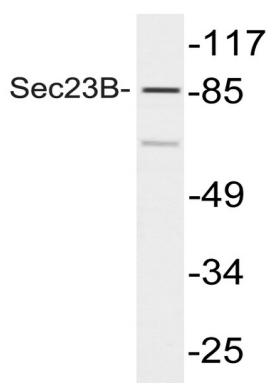
Product Name: Sec23B Rabbit Polyclonal Antibody
Catalog #: APRab17692



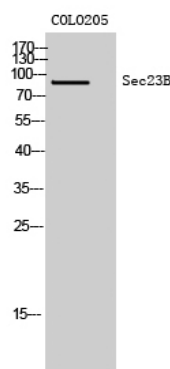
The protein encoded by this gene is a member of the SEC23 subfamily of the SEC23/SEC24 family, which is involved in vesicle trafficking. The encoded protein has similarity to yeast Sec23p component of COPII. COPII is the coat protein complex responsible for vesicle budding from the ER. The function of this gene product has been implicated in cargo selection and concentration. Multiple alternatively spliced transcript variants have been identified in this gene. [provided by RefSeq, Feb 2010],function:Component of the COPII coat, that covers ER-derived vesicles involved in transport from the endoplasmic reticulum to the Golgi apparatus. COPII acts in the cytoplasm to promote the transport of secretory, plasma membrane, and vacuolar proteins from the endoplasmic reticulum to the Golgi complex.,similarity:Belongs to the SEC23/SEC24 family. SEC23 subfamily.,subunit:COPII is composed of at least five proteins: the Sec23/24 complex, the Sec13/31 complex and Sar1.,

Research Area

Image Data



Western blot analysis of lysate from COLO205 cells, using Sec23B antibody.



Western Blot analysis of COLO205 cells using Sec23B Polyclonal Antibody

Note

For research use only.

Product Name: Sec23B Rabbit Polyclonal Antibody
Catalog #: APRab17692

