

Product Name: SEC22B Rabbit Polyclonal Antibody
Catalog #: APRab17691



Summary

Production Name	SEC22B Rabbit Polyclonal Antibody
Description	Rabbit Polyclonal Antibody
Host	Rabbit
Application	WB,IHC-P,IF-P,IF-F,ICC/IF,ELISA
Reactivity	Human,Mouse,Rat

Performance

Conjugation	Unconjugated
Modification	Unmodified
Isotype	IgG
Clonality	Polyclonal
Form	Liquid
Storage	Store at 4°C short term. Aliquot and store at -20°C long term. Avoid freeze/thaw cycles.
Buffer	Liquid in PBS containing 50% glycerol, 0.5% BSA and 0.02% New type preservative N.
Purification	Affinity purification

Immunogen

Gene Name	SEC22B SEC22B; SEC22L1; Vesicle-trafficking protein SEC22b; ER-Golgi SNARE of 24 kDa; ERS-24; ERS24; SEC22 vesicle-trafficking protein homolog B; SEC22 vesicle-trafficking protein-like 1
Alternative Names	
Gene ID	9554.0
SwissProt ID	O75396.Synthesized peptide derived from the Internal region of human SEC22B.

Application

Dilution Ratio	WB 1:500-1:2000, IHC-P 1:100-1:300, ELISA 1:10000, IF-P/IF-F/ICC/IF 1:50-200
Molecular Weight	23kDa

Product Name: SEC22B Rabbit Polyclonal Antibody
Catalog #: AP Rab17691



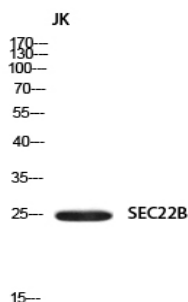
Background

The protein encoded by this gene is a member of the SEC22 family of vesicle trafficking proteins. It seems to complex with SNARE and it is thought to play a role in the ER-Golgi protein trafficking. This protein has strong similarity to *Mus musculus* and *Cricetulus griseus* proteins.[provided by RefSeq, Sep 2009],function:SNARE involved in targeting and fusion of ER-derived transport vesicles with the Golgi complex as well as Golgi-derived retrograde transport vesicles with the ER.,PTM:Phosphorylated upon DNA damage, probably by ATM or ATR.,similarity:Belongs to the synaptobrevin family.,similarity:Contains 1 longin domain.,similarity:Contains 1 v-SNARE coiled-coil homology domain.,subcellular location:Identified by mass spectrometry in melanosome fractions from stage I to stage IV.,subunit:Component of two distinct SNARE complexes consisting of STX5, GOSR2/BOS1, BET1 and SEC22B or STX18, USE1L, BNIP1/SEC20L and SEC22B. YKT6 can probably replace SEC22B in either complex.,

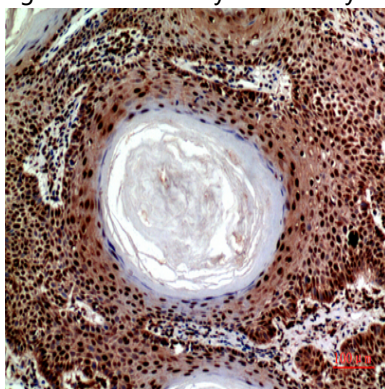
Research Area

SNARE interactions in vesicular transport;

Image Data



Western blot analysis of JK using SEC22B antibody.. Secondary antibody was diluted at 1:20000



Immunohistochemical analysis of paraffin-embedded human-skin, antibody was diluted at 1:100

Product Name: SEC22B Rabbit Polyclonal Antibody
Catalog #: APRab17691



Note

For research use only.