

Product Name: SCCA2 Rabbit Polyclonal Antibody
Catalog #: APRab17640



Summary

Production Name	SCCA2 Rabbit Polyclonal Antibody
Description	Rabbit Polyclonal Antibody
Host	Rabbit
Application	WB,ELISA,IHC-P
Reactivity	Human,Rat,Mouse

Performance

Conjugation	Unconjugated
Modification	Unmodified
Isotype	IgG
Clonality	Polyclonal
Form	Liquid
Storage	Store at 4°C short term. Aliquot and store at -20°C long term. Avoid freeze/thaw cycles.
Buffer	Liquid in PBS containing 50% glycerol, 0.5% BSA and 0.02% New type preservative N.
Purification	Affinity purification

Immunogen

Gene Name	SERPINB4
Alternative Names	SERPINB4; PI11; SCCA2; Serpin B4; Leupin; Peptidase inhibitor 11; PI-11; Squamous cell carcinoma antigen 2; SCCA-2
Gene ID	6318.0
SwissProt ID	P48594.The antiserum was produced against synthesized peptide derived from human SERPINB4. AA range:261-310

Application

Dilution Ratio	WB 1:500-2000, IHC-P 1:50-300, ELISA 2000-20000
Molecular Weight	45kDa

Product Name: SCCA2 Rabbit Polyclonal Antibody
Catalog #: AP Rab17640

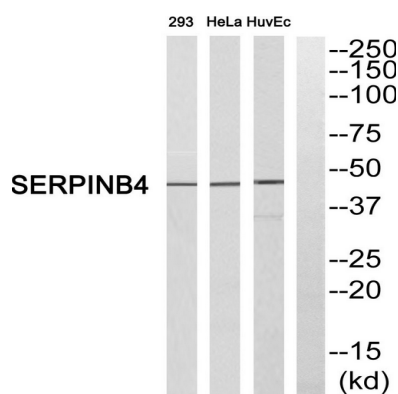


Background

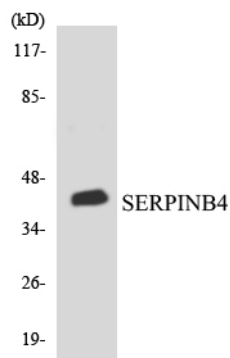
function: May act as a protease inhibitor to modulate the host immune response against tumor cells., similarity: Belongs to the serpin family., similarity: Belongs to the serpin family. Ov-serpin subfamily., subcellular location: Seems to also be secreted in plasma by cancerous cells but at a low level., tissue specificity: Squamous cells., function: May act as a protease inhibitor to modulate the host immune response against tumor cells., similarity: Belongs to the serpin family., similarity: Belongs to the serpin family. Ov-serpin subfamily., subcellular location: Seems to also be secreted in plasma by cancerous cells but at a low level., tissue specificity: Squamous cells.,

Research Area

Image Data

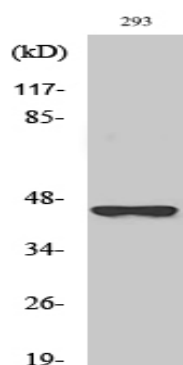


Western blot analysis of SERPINB4 Antibody. The lane on the right is blocked with the SERPINB4 peptide.



Western blot analysis of the lysates from COLO205 cells using SERPINB4 antibody.

Product Name: SCCA2 Rabbit Polyclonal Antibody
Catalog #: APRab17640



Western Blot analysis of various cells using SCCA2 Polyclonal Antibody

Note

For research use only.