

Product Name: Sarcoglycan- β Rabbit Polyclonal Antibody
Catalog #: APRab17607

Summary

Production Name	Sarcoglycan- β Rabbit Polyclonal Antibody
Description	Rabbit Polyclonal Antibody
Host	Rabbit
Application	WB,IHC-P,IF-P,IF-F,ICC/IF,ELISA
Reactivity	Human,Mouse

Performance

Conjugation	Unconjugated
Modification	Unmodified
Isotype	IgG
Clonality	Polyclonal
Form	Liquid
Storage	Store at 4°C short term. Aliquot and store at -20°C long term. Avoid freeze/thaw cycles.
Buffer	Liquid in PBS containing 50% glycerol, 0.5% BSA and 0.02% New type preservative N.
Purification	Affinity purification

Immunogen

Gene Name	SGCB
Alternative Names	SGCB; Beta-sarcoglycan; Beta-SG; 43 kDa dystrophin-associated glycoprotein; 43DAG; A3b
Gene ID	6443.0
SwissProt ID	Q16585.The antiserum was produced against synthesized peptide derived from human Sarcoglycan-beta. AA range:87-136

Application

Dilution Ratio	WB 1:500-1:2000, IHC-P 1:100-1:300, ELISA 1:40000, IF-P/IF-F/ICC/IF 1:50-200
Molecular Weight	43kDa

Product Name: Sarcoglycan- β Rabbit Polyclonal Antibody
Catalog #: APRab17607

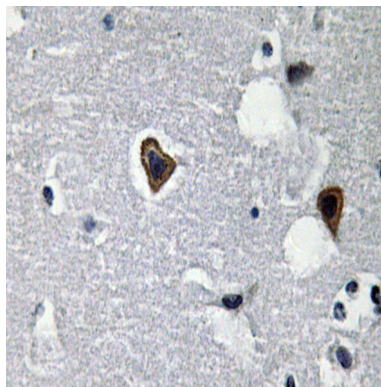
Background

This gene encodes a member of the sarcoglycan family. Sarcoglycans are transmembrane components in the dystrophin-glycoprotein complex which help stabilize the muscle fiber membranes and link the muscle cytoskeleton to the extracellular matrix. Mutations in this gene have been associated with limb-girdle muscular dystrophy.[provided by RefSeq, Oct 2008],disease:Defects in SGCB are the cause of limb-girdle muscular dystrophy type 2E (LGMD2E) [MIM:604286]. LGMD2E is an autosomal recessive disorder.,function:Component of the sarcoglycan complex, a subcomplex of the dystrophin-glycoprotein complex which forms a link between the F-actin cytoskeleton and the extracellular matrix.,online information:SGCB mutations in LGMD2E,PTM:Disulfide bonds are present.,similarity:Belongs to the sarcoglycan beta/delta/gamma/zeta family.,subunit:Cross-link to form 2 major subcomplexes: one consisting of SGCB, SGCD and SGCG and the other consisting of SGCB and SGCD. The association between SGCB and SGCG is particularly strong while SGCA is loosely associated with the other sarcoglycans.,tissue specificity:Highest expression in heart and skeletal muscle. Low expression in brain, kidney, placenta, pancreas and lung. High expression in fetal brain. Also found in fetal lung, kidney and liver.,

Research Area

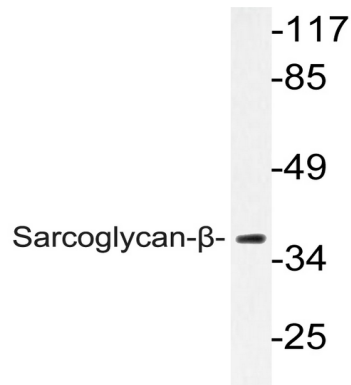
Hypertrophic cardiomyopathy (HCM);Arrhythmogenic right ventricular cardiomyopathy (ARVC);Dilated cardiomyopathy;Viral myocarditis;

Image Data

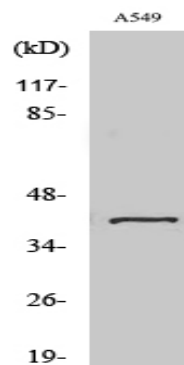


Immunohistochemistry analysis of Sarcoglycan- β antibody in paraffin-embedded human brain tissue.

Product Name: Sarcoglycan- β Rabbit Polyclonal Antibody
Catalog #: APRab17607



Western blot analysis of lysate from A549 cells, using Sarcoglycan- β antibody.



Western Blot analysis of various cells using Sarcoglycan- β Polyclonal Antibody

Note

For research use only.