

Summary

Production Name	Sar1B Rabbit Polyclonal Antibody
Description	Rabbit Polyclonal Antibody
Host	Rabbit
Application	WB,IHC-P,IF-P,IF-F,ICC/IF,ELISA
Reactivity	Human,Mouse,Rat

Performance

Conjugation	Unconjugated
Modification	Unmodified
Isotype	IgG
Clonality	Polyclonal
Form	Liquid
Storage	Store at 4°C short term. Aliquot and store at -20°C long term. Avoid freeze/thaw cycles.
Buffer	Liquid in PBS containing 50% glycerol, 0.5% BSA and 0.02% New type preservative N.
Purification	Affinity purification

Immunogen

Gene Name	SAR1B
Alternative Names	SAR1B; SARA2; SARB; GTP-binding protein SAR1b; GTP-binding protein B; GTBPB
Gene ID	51128.0
SwissProt ID	Q9Y6B6.The antiserum was produced against synthesized peptide derived from human SAR1B. AA range:111-160

Application

Dilution Ratio	WB 1:500-1:2000, IHC-P 1:100-1:300, ELISA 1:20000, IF-P/IF-F/ICC/IF 1:50-200
Molecular Weight	22kDa

Background

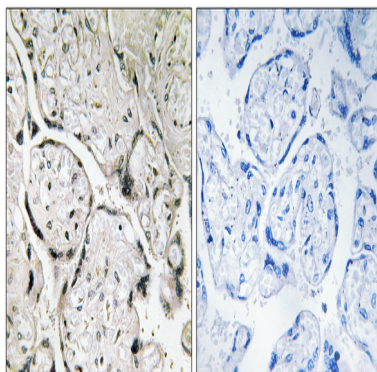
Product Name: Sar1B Rabbit Polyclonal Antibody
Catalog #: AP Rab17603



The protein encoded by this gene is a small GTPase that acts as a homodimer. The encoded protein is activated by the guanine nucleotide exchange factor PREB and is involved in protein transport from the endoplasmic reticulum to the Golgi. This protein is part of the COPII coat complex. Defects in this gene are a cause of chylomicron retention disease (CMRD), also known as Anderson disease (ANDD). Two transcript variants encoding the same protein have been found for this gene. [provided by RefSeq, Mar 2010], disease: Defects in SAR1B are the cause of chylomicron retention disease (CMRD) [MIM:246700]; also known as Anderson disease (ANDD). CMRD is an autosomal recessive disorder of severe fat malabsorption associated with failure to thrive in infancy. The condition is characterized by deficiency of fat-soluble vitamins, low blood cholesterol levels, and a selective absence of chylomicrons from blood. Affected individuals accumulate chylomicron-like particles in membrane-bound compartments of enterocytes, which contain large cytosolic lipid droplets., function: Involved in transport from the endoplasmic reticulum to the Golgi apparatus. Activated by the guanine nucleotide exchange factor PREB. Involved in the selection of the protein cargo and the assembly of the COPII coat complex., similarity: Belongs to the small GTPase superfamily., similarity: Belongs to the small GTPase superfamily. SAR1 family., subcellular location: Associated with the endoplasmic reticulum and Golgi stacks, in particular in the juxta-nuclear Golgi region., subunit: Homodimer. Binds PREB. Part of the COPII coat complex. Binds to the cytoplasmic tails of target proteins in the endoplasmic reticulum., tissue specificity: Expressed in many tissues including small intestine, liver, muscle and brain.,

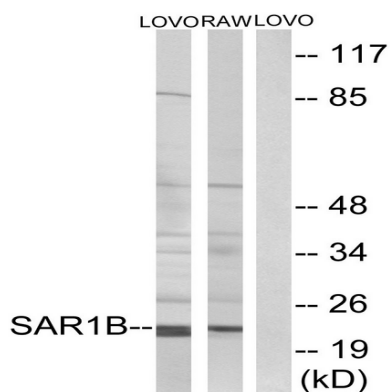
Research Area

Image Data



Immunohistochemistry analysis of paraffin-embedded human placenta tissue, using SAR1B Antibody. The picture on the right is blocked with the synthesized peptide.

Product Name: Sar1B Rabbit Polyclonal Antibody
Catalog #: APRab17603



Western blot analysis of lysates from LOVO and RAW264.7 cells, using SAR1B Antibody. The lane on the right is blocked with the synthesized peptide.

Note

For research use only.