

Product Name: S-100P Rabbit Polyclonal Antibody
Catalog #: APRab17477



Summary

Production Name	S-100P Rabbit Polyclonal Antibody
Description	Rabbit Polyclonal Antibody
Host	Rabbit
Application	WB,IHC-P,IF-P,IF-F,ICC/IF,ELISA
Reactivity	Human,Rat,Mouse

Performance

Conjugation	Unconjugated
Modification	Unmodified
Isotype	IgG
Clonality	Polyclonal
Form	Liquid
Storage	Store at 4°C short term. Aliquot and store at -20°C long term. Avoid freeze/thaw cycles.
Buffer	Liquid in PBS containing 50% glycerol, 0.5% BSA and 0.02% New type preservative N.
Purification	Affinity purification

Immunogen

Gene Name	S100P
Alternative Names	S100P; S100E; Protein S100-P; Protein S100-E; S100 calcium-binding protein P
Gene ID	6286.0
SwissProt ID	P25815.The antiserum was produced against synthesized peptide derived from human S100P. AA range:26-75

Application

Dilution Ratio	WB 1:500-1:2000, IHC-P 1:100-1:300, ELISA 1:20000, IF-P/IF-F/ICC/IF 1:50-200
Molecular Weight	10kDa

Background

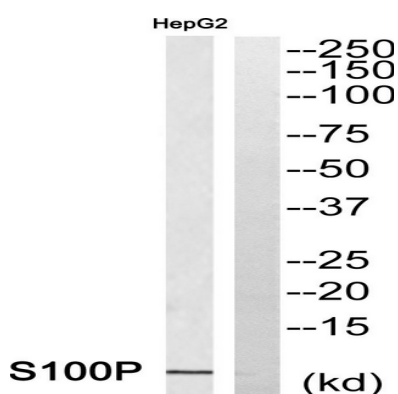
Product Name: S-100P Rabbit Polyclonal Antibody
Catalog #: APRab17477



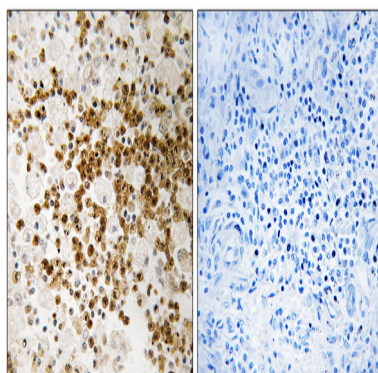
The protein encoded by this gene is a member of the S100 family of proteins containing 2 EF-hand calcium-binding motifs. S100 proteins are localized in the cytoplasm and/or nucleus of a wide range of cells, and involved in the regulation of a number of cellular processes such as cell cycle progression and differentiation. S100 genes include at least 13 members which are located as a cluster on chromosome 1q21; however, this gene is located at 4p16. This protein, in addition to binding Ca^{2+} , also binds Zn^{2+} and Mg^{2+} . This protein may play a role in the etiology of prostate cancer. [provided by RefSeq, Jul 2008],miscellaneous:This protein binds two calcium ions.,similarity:Belongs to the S-100 family.,similarity:Contains 2 EF-hand domains.,subcellular location:Colocalizes with S100BPB in the nucleus.,subunit:Homodimer. Interacts with S100BPB and S100Z.,tissue specificity:Up-regulated in various pancreatic ductal adenocarcinomas and pancreatic intraepithelial neoplasias.,

Research Area

Image Data



Western blot analysis of S100P Antibody. The lane on the right is blocked with the S100P peptide.



Immunohistochemistry analysis of paraffin-embedded human lung carcinoma, using S100P Antibody. The lane on the right is blocked with the S100P peptide.

Product Name: S-100P Rabbit Polyclonal Antibody
Catalog #: APRab17477



Note

For research use only.