

Product Name: S-100A7L2 Rabbit Polyclonal Antibody
Catalog #: AP Rab17473



Summary

Production Name	S-100A7L2 Rabbit Polyclonal Antibody
Description	Rabbit Polyclonal Antibody
Host	Rabbit
Application	WB,ELISA
Reactivity	Human,Rat,Mouse

Performance

Conjugation	Unconjugated
Modification	Unmodified
Isotype	IgG
Clonality	Polyclonal
Form	Liquid
Storage	Store at 4°C short term. Aliquot and store at -20°C long term. Avoid freeze/thaw cycles.
Buffer	Liquid in PBS containing 50% glycerol, 0.5% BSA and 0.02% New type preservative N.
Purification	Affinity purification

Immunogen

Gene Name	S100A7L2
Alternative Names	S100A7L2; S100A7B; Protein S100-A7-like 2; S100 calcium-binding protein A7-like 2
Gene ID	645922.0
SwissProt ID	Q5SY68.The antiserum was produced against synthesized peptide derived from human S100A7L2. AA range:38-87

Application

Dilution Ratio	WB 1:500-1:2000, ELISA 1:10000.Not yet tested in other applications.
Molecular Weight	11kDa

Background

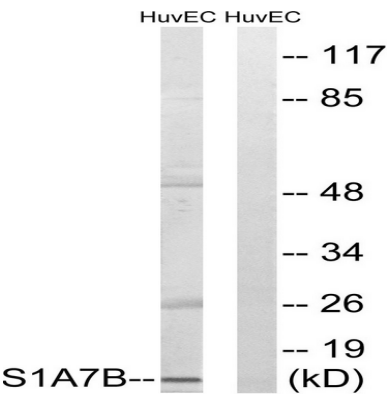
Product Name: S-100A7L2 Rabbit Polyclonal Antibody
Catalog #: APRab17473



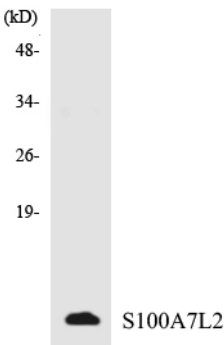
similarity:Belongs to the S-100 family.,similarity:Contains 2 EF-hand domains.,similarity:Belongs to the S-100 family.,similarity:Contains 2 EF-hand domains.,

Research Area

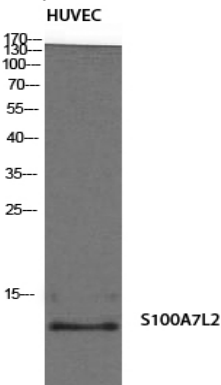
Image Data



Western blot analysis of lysates from HUVEC cells, using S100A7L2 Antibody. The lane on the right is blocked with the synthesized peptide.



Western blot analysis of the lysates from HepG2 cells using S100A7L2 antibody.



Western Blot analysis of HuvEc cells using S-100A7L2 Polyclonal Antibody

Product Name: S-100A7L2 Rabbit Polyclonal Antibody
Catalog #: APRab17473



Note

For research use only.