

Product Name: S-100A5 Rabbit Polyclonal Antibody
Catalog #: APRab17470



Summary

Production Name	S-100A5 Rabbit Polyclonal Antibody
Description	Rabbit Polyclonal Antibody
Host	Rabbit
Application	WB,ELISA
Reactivity	Human,Mouse,Rat

Performance

Conjugation	Unconjugated
Modification	Unmodified
Isotype	IgG
Clonality	Polyclonal
Form	Liquid
Storage	Store at 4°C short term. Aliquot and store at -20°C long term. Avoid freeze/thaw cycles.
Buffer	Liquid in PBS containing 50% glycerol, 0.5% BSA and 0.02% New type preservative N.
Purification	Affinity purification

Immunogen

Gene Name	S100A5
Alternative Names	S100A5; S100D; Protein S100-A5; Protein S-100D; S100 calcium-binding protein A5
Gene ID	6276.0
SwissProt ID	P33763.The antiserum was produced against synthesized peptide derived from human S100A5. AA range:34-83

Application

Dilution Ratio	WB 1:500-1:2000, ELISA 1:20000.Not yet tested in other applications.
Molecular Weight	32kDa

Background

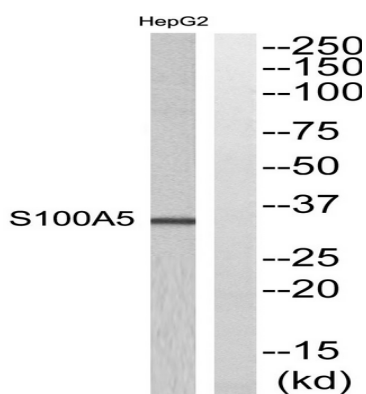
Product Name: S-100A5 Rabbit Polyclonal Antibody
Catalog #: AP Rab17470



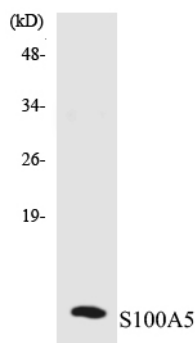
S100 calcium binding protein A5(S100A5) Homo sapiens The protein encoded by this gene is a member of the S100 family of proteins containing 2 EF-hand calcium-binding motifs. S100 proteins are localized in the cytoplasm and/or nucleus of a wide range of cells, and involved in the regulation of a number of cellular processes such as cell cycle progression and differentiation. S100 genes include at least 13 members which are located as a cluster on chromosome 1q21. This protein has a Ca²⁺ affinity 20- to 100-fold higher than the other S100 proteins studied under identical conditions. This protein also binds Zn²⁺ and Cu²⁺, and Cu²⁺ strongly which impairs the binding of Ca²⁺. This protein is expressed in very restricted regions of the adult brain. [provided by RefSeq, Jul 2008],similarity:Belongs to the S-100 family.,similarity:Contains 2 EF-hand domains.,

Research Area

Image Data



Western blot analysis of S100A5 Antibody. The lane on the right is blocked with the S100A5 peptide.



Western blot analysis of the lysates from K562 cells using S100A5 antibody.

Note

For research use only.