

Product Name: S-100A3 Rabbit Polyclonal Antibody
Catalog #: APRab17468



Summary

Production Name	S-100A3 Rabbit Polyclonal Antibody
Description	Rabbit Polyclonal Antibody
Host	Rabbit
Application	WB,IHC-P,IF-P,IF-F,ICC/IF,ELISA
Reactivity	Human,Mouse,Rat

Performance

Conjugation	Unconjugated
Modification	Unmodified
Isotype	IgG
Clonality	Polyclonal
Form	Liquid
Storage	Store at 4°C short term. Aliquot and store at -20°C long term. Avoid freeze/thaw cycles.
Buffer	Liquid in PBS containing 50% glycerol, 0.5% BSA and 0.02% New type preservative N.
Purification	Affinity purification

Immunogen

Gene Name	S100A3
Alternative Names	S100A3; S100E; Protein S100-A3; Protein S-100E; S100 calcium-binding protein A3
Gene ID	6274.0
SwissProt ID	P33764. The antiserum was produced against synthesized peptide derived from human S100A3. AA range:26-75

Application

Dilution Ratio	WB 1:500-2000, IHC-P 1:100-1:300, ELISA 1:40000, IF-P/IF-F/ICC/IF 1:50-200
Molecular Weight	22kDa

Background

S100 calcium binding protein A3(S100A3) Homo sapiens The protein encoded by this gene is a member of the S100

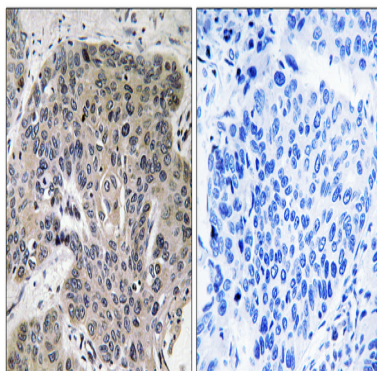
Product Name: S-100A3 Rabbit Polyclonal Antibody
Catalog #: APRab17468



family of proteins containing 2 EF-hand calcium-binding motifs. S100 proteins are localized in the cytoplasm and/or nucleus of a wide range of cells, and involved in the regulation of a number of cellular processes such as cell cycle progression and differentiation. S100 genes include at least 13 members which are located as a cluster on chromosome 1q21. This protein has the highest content of cysteines of all S100 proteins, has a high affinity for Zinc, and is highly expressed in human hair cuticle. The precise function of this protein is unknown. [provided by RefSeq, Jul 2008],function: Binds both calcium and zinc. Probably binds 2 zinc ions per molecule. May be involved in calcium-dependent cuticle cell differentiation and hair shaft formation.,similarity: Belongs to the S-100 family.,similarity: Contains 2 EF-hand domains.,subunit: Homodimer.,tissue specificity: Skin specific.,

Research Area

Image Data



Immunohistochemistry analysis of paraffin-embedded human lung carcinoma tissue, using S100A3 Antibody. The picture on the right is blocked with the synthesized peptide.

Note

For research use only.