

**Product Name: S-100A16 Rabbit Polyclonal Antibody**  
**Catalog #: APRab17467**



## Summary

<b>Production Name</b>	S-100A16 Rabbit Polyclonal Antibody
<b>Description</b>	Rabbit Polyclonal Antibody
<b>Host</b>	Rabbit
<b>Application</b>	WB,IHC-P,IF-P,IF-F,ICC/IF,ELISA
<b>Reactivity</b>	Human,Rat

## Performance

<b>Conjugation</b>	Unconjugated
<b>Modification</b>	Unmodified
<b>Isotype</b>	IgG
<b>Clonality</b>	Polyclonal
<b>Form</b>	Liquid
<b>Storage</b>	Store at 4°C short term. Aliquot and store at -20°C long term. Avoid freeze/thaw cycles.
<b>Buffer</b>	Liquid in PBS containing 50% glycerol, 0.5% BSA and 0.02% New type preservative N.
<b>Purification</b>	Affinity purification

## Immunogen

<b>Gene Name</b>	S100A16
<b>Alternative Names</b>	S100A16; S100F; AAG13; Protein S100-A16; Aging-associated gene 13 protein; Protein S100-F; S100 calcium-binding protein A16
<b>Gene ID</b>	140576.0
<b>SwissProt ID</b>	Q96FQ6.The antiserum was produced against synthesized peptide derived from human S100A16. AA range:19-68

## Application

<b>Dilution Ratio</b>	WB 1:500-1:2000, IHC-P 1:100-1:300, ELISA 1:40000, IF-P/IF-F/ICC/IF 1:50-200
<b>Molecular Weight</b>	20kDa

**Product Name: S-100A16 Rabbit Polyclonal Antibody**  
**Catalog #: APRab17467**

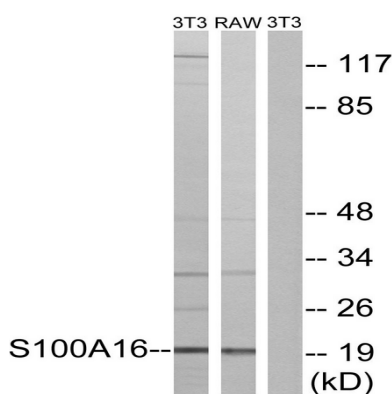


## Background

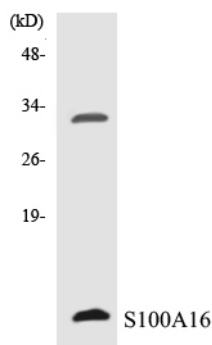
similarity:Belongs to the S-100 family.,similarity:Contains 2 EF-hand domains.,similarity:Belongs to the S-100 family.,similarity:Contains 2 EF-hand domains.,

## Research Area

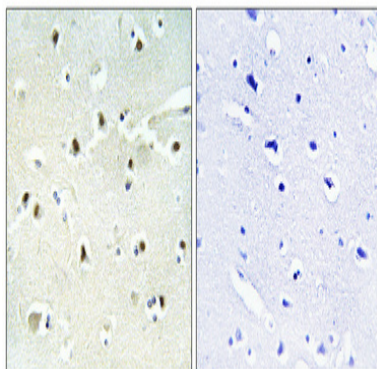
## Image Data



Western blot analysis of lysates from NIH/3T3 and RAW264.7 cells, using S100A16 Antibody. The lane on the right is blocked with the synthesized peptide.



Western blot analysis of the lysates from RAW264.7 cells using S100A16 antibody.

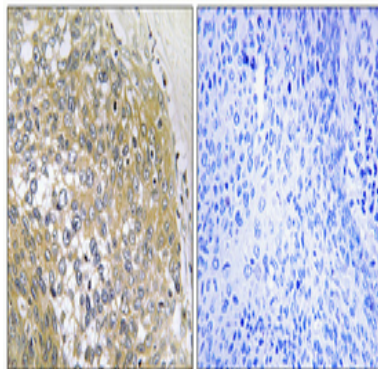


**Product Name: S-100A16 Rabbit Polyclonal Antibody**  
**Catalog #: APRab17467**



---

Immunohistochemical analysis of paraffin-embedded Human brain. Antibody was diluted at 1:100 (4°,overnight) . High-pressure and temperature Tris-EDTA,pH8.0 was used for antigen retrieval. Negative contrl (right) obtaned from antibody was pre-absorbed by immunogen peptide.



Immunohistochemical analysis of paraffin-embedded Human cervix cancer. Antibody was diluted at 1:100 (4°,overnight) . High-pressure and temperature Tris-EDTA,pH8.0 was used for antigen retrieval. Negetive contrl (right) obtaned from antibody was pre-absorbed by immunogen peptide.

## **Note**

For research use only.