

**Product Name: RyR-2 Rabbit Polyclonal Antibody**  
**Catalog #: AP Rab17457**



## Summary

<b>Production Name</b>	RyR-2 Rabbit Polyclonal Antibody
<b>Description</b>	Rabbit Polyclonal Antibody
<b>Host</b>	Rabbit
<b>Application</b>	WB,IHC-P,IF-P,IF-F,ICC/IF,ELISA
<b>Reactivity</b>	Human,Mouse,Rat

## Performance

<b>Conjugation</b>	Unconjugated
<b>Modification</b>	Unmodified
<b>Isotype</b>	IgG
<b>Clonality</b>	Polyclonal
<b>Form</b>	Liquid
<b>Storage</b>	Store at 4°C short term. Aliquot and store at -20°C long term. Avoid freeze/thaw cycles.
<b>Buffer</b>	Liquid in PBS containing 50% glycerol, 0.5% BSA and 0.02% New type preservative N.
<b>Purification</b>	Affinity purification

## Immunogen

<b>Gene Name</b>	RYR2
<b>Alternative Names</b>	RYR2; Ryanodine receptor 2; RYR-2; RyR2; hRYR-2; Cardiac muscle ryanodine receptor; Cardiac muscle ryanodine receptor-calcium release channel; Type 2 ryanodine receptor
<b>Gene ID</b>	6262.0
<b>SwissProt ID</b>	Q92736.The antiserum was produced against synthesized peptide derived from human RyR2. AA range:2774-2823

## Application

<b>Dilution Ratio</b>	WB 1:500-2000, IHC-P 1:100-1:300, IF-P/IF-F/ICC/IF 1:200-1:1000, ELISA 1:5000.Not yet tested in other applications.
<b>Molecular Weight</b>	200-300kDa

## Background

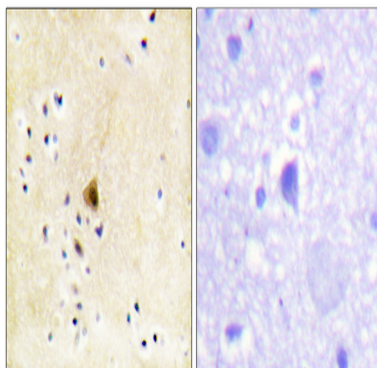
This gene encodes a ryanodine receptor found in cardiac muscle sarcoplasmic reticulum. The encoded protein is one of the components of a calcium channel, composed of a tetramer of the ryanodine receptor proteins and a tetramer of FK506 binding protein 1B proteins, that supplies calcium to cardiac muscle. Mutations in this gene are associated with stress-induced polymorphic ventricular tachycardia and arrhythmogenic right ventricular dysplasia. [provided by RefSeq, Jul 2008],developmental stage:Expressed in myometrium during pregnancy.,disease:Defects in RYR2 are the cause of catecholaminergic polymorphic ventricular tachycardia type 1 (CPVT1) [MIM:604772]; also known as stress-induced polymorphic ventricular tachycardia (VTSIP). CPVT1 is an autosomal dominant form of arrhythmogenic disorder characterized by stress-induced, bidirectional ventricular tachycardia that may degenerate into cardiac arrest and cause sudden death.,disease:Defects in RYR2 are the cause of familial arrhythmogenic right ventricular dysplasia 2 (ARVD2) [MIM:600996]; also known as arrhythmogenic right ventricular cardiomyopathy 2 (ARVC2). ARVD is an autosomal dominant disease characterized by partial degeneration of the myocardium of the right ventricle, electrical instability, and sudden death. It is clinically defined by electrocardiographic and angiographic criteria; pathologic findings, replacement of ventricular myocardium with fatty and fibrous elements, preferentially involve the right ventricular free wall.,function:Communication between transverse-tubules and sarcoplasmic reticulum. Contraction of cardiac muscle is triggered by release of calcium ions from SR following depolarization of T-tubules.,induction:By TGF-beta.,miscellaneous:Ryanodine is an alkaloid that binds to the Ca-release channel in junctional SR and modulates its activity.,miscellaneous:The calcium release channel activity resides in the C-terminal region while the remaining part of the protein constitutes the 'foot' structure spanning the junctional gap between the SR and the T-tubule. It is possible that the foot structure interacts with the cytoplasmic region of the dihydropyridine receptor.,miscellaneous:The calcium release channel is modulated by calcium ions, magnesium ions, ATP and calmodulin.,online information:Ryanodine receptor entry,online information:RYR2 entry,similarity:Belongs to the ryanodine receptor family.,similarity:Contains 2 EF-hand domains.,similarity:Contains 3 B30.2/SPRY domains.,similarity:Contains 5 MIR domains.,subunit:Homotetramer.,tissue specificity:Heart muscle, brain (cerebellum and hippocampus) and placenta.,

## Research Area

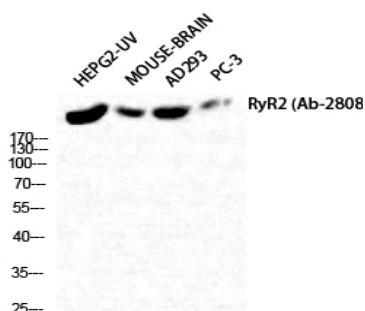
Calcium;Cardiac muscle contraction;Hypertrophic cardiomyopathy (HCM);Arrhythmogenic right ventricular cardiomyopathy (ARVC);Dilated cardiomyopathy;

## Image Data

**Product Name: RyR-2 Rabbit Polyclonal Antibody**  
**Catalog #: AP Rab17457**



Immunohistochemistry analysis of paraffin-embedded human brain tissue, using RyR2 Antibody. The picture on the right is blocked with the synthesized peptide.



Western Blot analysis of HepG2-UV MOUSE-BRAIN AD293 PC-3 cells using RyR-2 Polyclonal Antibody diluted at 1 : 2000

## Note

For research use only.