

Product Name: RUFY1 Rabbit Polyclonal Antibody
Catalog #: APRab17438



Summary

Production Name	RUFY1 Rabbit Polyclonal Antibody
Description	Rabbit Polyclonal Antibody
Host	Rabbit
Application	WB,ELISA
Reactivity	Human,Mouse

Performance

Conjugation	Unconjugated
Modification	Unmodified
Isotype	IgG
Clonality	Polyclonal
Form	Liquid
Storage	Store at 4°C short term. Aliquot and store at -20°C long term. Avoid freeze/thaw cycles.
Buffer	Liquid in PBS containing 50% glycerol, 0.5% BSA and 0.02% New type preservative N.
Purification	Affinity purification

Immunogen

Gene Name	RUFY1
Alternative Names	RUFY1; RABIP4; ZFYVE12; RUN and FYVE domain-containing protein 1; FYVE-finger protein EIP1; La-binding protein 1; Rab4-interacting protein; Zinc finger FYVE domain-containing protein 12
Gene ID	80230.0
SwissProt ID	Q96T51. The antiserum was produced against synthesized peptide derived from human RUFY1. AA range:139-188

Application

Dilution Ratio	WB 1:500-1:2000, ELISA 1:10000.Not yet tested in other applications.
Molecular Weight	80kDa

Product Name: RUFY1 Rabbit Polyclonal Antibody
Catalog #: AP Rab17438



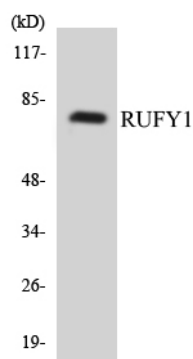
Background

RUN and FYVE domain containing 1(RUFY1) Homo sapiens This gene encodes a protein that contains a RUN domain and a FYVE-type zinc finger domain. The encoded protein binds to phosphatidylinositol-3-phosphate (PI3P) and plays a role in early endosomal trafficking, tethering and fusion through interactions with small GTPases including Rab4, Rab5 and Rab14. Alternatively spliced transcript variants encoding multiple isoforms have been observed for this gene. [provided by RefSeq, Dec 2011],domain:The FYVE-type zinc finger domain mediates interactions with phosphatidylinositol 3-phosphate.,function: Binds phospholipid vesicles containing phosphatidylinositol 3-phosphate and participates in early endosomal trafficking.,PTM: Phosphorylated upon DNA damage, probably by ATM or ATR.,PTM: Phosphorylation on Tyr-389 and/or Tyr-400 is required for interaction with BMX and endosomal targeting.,similarity: Contains 1 FYVE-type zinc finger.,similarity: Contains 1 RUN domain.,subunit: Interacts with BMX. May interact with SSB. Interacts with RAB4 and RAB5 that have been activated by GTP-binding.,tissue specificity: Broadly expressed, with highest levels in lung, testis, kidney and brain.,

Research Area

Endocytosis;

Image Data



Western blot analysis of the lysates from HUVEC cells using RUFY1 antibody.

Note

For research use only.