

Product Name: Rsu-1 Rabbit Polyclonal Antibody
Catalog #: APRab17419



Summary

Production Name	Rsu-1 Rabbit Polyclonal Antibody
Description	Rabbit Polyclonal Antibody
Host	Rabbit
Application	WB,ELISA
Reactivity	Human,Mouse

Performance

Conjugation	Unconjugated
Modification	Unmodified
Isotype	IgG
Clonality	Polyclonal
Form	Liquid
Storage	Store at 4°C short term. Aliquot and store at -20°C long term. Avoid freeze/thaw cycles.
Buffer	Liquid in PBS containing 50% glycerol, 0.5% BSA and 0.02% New type preservative N.
Purification	Affinity purification

Immunogen

Gene Name	RSU1
Alternative Names	RSU1; RSP1; Ras suppressor protein 1; RSP-1; Rsu-1
Gene ID	6251.0
SwissProt ID	Q15404. The antiserum was produced against synthesized peptide derived from human RSU1. AA range:187-236

Application

Dilution Ratio	WB 1:500-1:2000, ELISA 1:20000. Not yet tested in other applications.
Molecular Weight	36kDa

Background

This gene encodes a protein that is involved in the Ras signal transduction pathway, growth inhibition, and nerve-growth

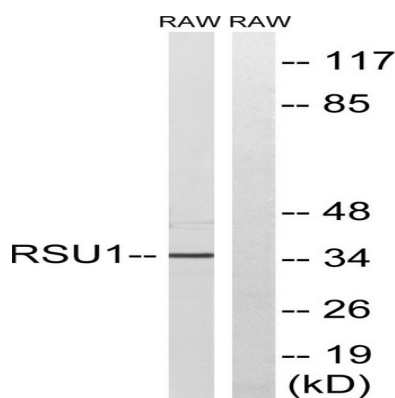
Product Name: Rsu-1 Rabbit Polyclonal Antibody
Catalog #: APRab17419



factor induced differentiation processes, as determined in mouse and human cell line studies. In mouse, the encoded protein was initially isolated based on its ability to inhibit v-Ras transformation. Multiple alternatively spliced transcript variants for this gene have been reported; one of these variants was found only in glioma tumors. [provided by RefSeq, Jul 2008],function:Potentially plays a role in the Ras signal transduction pathway. Capable of suppressing v-Ras transformation in vitro.,similarity:Contains 7 LRR (leucine-rich) repeats.,

Research Area

Image Data



Western blot analysis of lysates from RAW264.7 cells, using RSU1 Antibody. The lane on the right is blocked with the synthesized peptide.

Note

For research use only.