

**Product Name: RSAD1 Rabbit Polyclonal Antibody**  
**Catalog #: APRab17400**



## Summary

<b>Production Name</b>	RSAD1 Rabbit Polyclonal Antibody
<b>Description</b>	Rabbit Polyclonal Antibody
<b>Host</b>	Rabbit
<b>Application</b>	WB,IHC-P,IF-P,IF-F,ICC/IF,ELISA
<b>Reactivity</b>	Human,Mouse

## Performance

<b>Conjugation</b>	Unconjugated
<b>Modification</b>	Unmodified
<b>Isotype</b>	IgG
<b>Clonality</b>	Polyclonal
<b>Form</b>	Liquid
<b>Storage</b>	Store at 4°C short term. Aliquot and store at -20°C long term. Avoid freeze/thaw cycles.
<b>Buffer</b>	Liquid in PBS containing 50% glycerol, 0.5% BSA and 0.02% New type preservative N.
<b>Purification</b>	Affinity purification

## Immunogen

<b>Gene Name</b>	RSAD1
<b>Alternative Names</b>	RSAD1; Radical S-adenosyl methionine domain-containing protein 1; mitochondrial; Oxygen-independent coproporphyrinogen-III oxidase-like protein RSAD1
<b>Gene ID</b>	55316.0
<b>SwissProt ID</b>	Q9HA92.The antiserum was produced against synthesized peptide derived from human RSAD1. AA range:298-347

## Application

<b>Dilution Ratio</b>	WB 1:500-1:2000, IHC-P 1:100-1:300, ELISA 1:5000, IF-P/IF-F/ICC/IF 1:50-200
<b>Molecular Weight</b>	52kDa

**Product Name: RSAD1 Rabbit Polyclonal Antibody**  
**Catalog #: APRab17400**

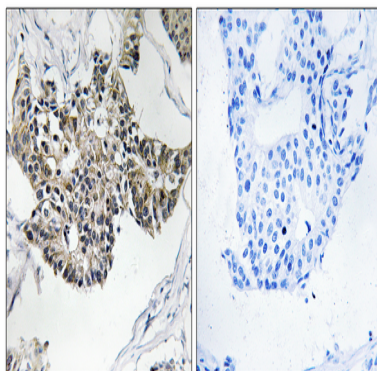


## Background

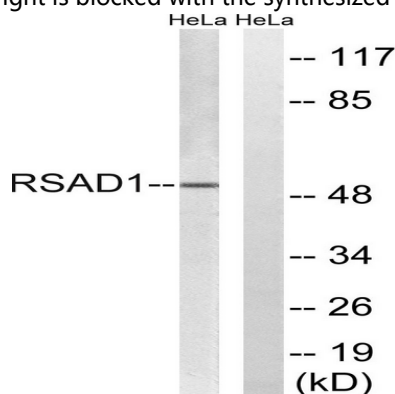
cofactor: Binds 1 4Fe-4S cluster. The cluster is coordinated with 3 cysteines and an exchangeable S-adenosyl-L-methionine. ,function: May be involved in porphyrin cofactor biosynthesis. ,similarity: Belongs to the anaerobic coproporphyrinogen-III oxidase family. ,cofactor: Binds 1 4Fe-4S cluster. The cluster is coordinated with 3 cysteines and an exchangeable S-adenosyl-L-methionine. ,function: May be involved in porphyrin cofactor biosynthesis. ,similarity: Belongs to the anaerobic coproporphyrinogen-III oxidase family. ,

## Research Area

## Image Data



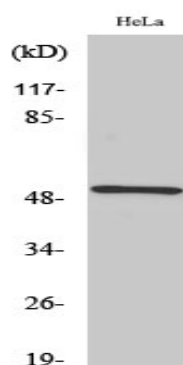
Immunohistochemistry analysis of paraffin-embedded human breast carcinoma tissue, using RSAD1 Antibody. The picture on the right is blocked with the synthesized peptide.



Western blot analysis of lysates from HeLa cells, using RSAD1 Antibody. The lane on the right is blocked with the synthesized peptide.

**Product Name: RSAD1 Rabbit Polyclonal Antibody**  
**Catalog #: APRab17400**

---



Western Blot analysis of various cells using RSAD1 Polyclonal Antibody

### **Note**

For research use only.