

Product Name: RRP7A Rabbit Polyclonal Antibody
Catalog #: AP Rab17390



Summary

| | |
|------------------------|--------------------------------------|
| Production Name | RRP7A Rabbit Polyclonal Antibody |
| Description | Rabbit Polyclonal Antibody |
| Host | Rabbit |
| Application | WB, IHC-P, IF-P, IF-F, ICC/IF, ELISA |
| Reactivity | Human, Mouse, Rat |

Performance

| | |
|---------------------|--|
| Conjugation | Unconjugated |
| Modification | Unmodified |
| Isotype | IgG |
| Clonality | Polyclonal |
| Form | Liquid |
| Storage | Store at 4°C short term. Aliquot and store at -20°C long term. Avoid freeze/thaw cycles. |
| Buffer | Liquid in PBS containing 50% glycerol, 0.5% BSA and 0.02% New type preservative N. |
| Purification | Affinity purification |

Immunogen

| | |
|--------------------------|--|
| Gene Name | RRP7A RRP7A; CGI-96; Ribosomal RNA-processing protein 7 homolog A; Gastric cancer antigen Zg14; RRP7B; Putative ribosomal RNA-processing protein 7 homolog B; Putative gastric cancer antigen Zg14-like protein |
| Alternative Names | |
| Gene ID | 27341.0 |
| SwissProt ID | Q9Y3A4.Synthesized peptide derived from the C-terminal region of human RRP7A. |

Application

| | |
|-------------------------|--|
| Dilution Ratio | WB 1:500-1:2000, IHC-P 1:100-300, ELISA 1:20000, IF-P/IF-F/ICC/IF 1:50-200 |
| Molecular Weight | 32kDa |

Product Name: RRP7A Rabbit Polyclonal Antibody
Catalog #: AP Rab17390

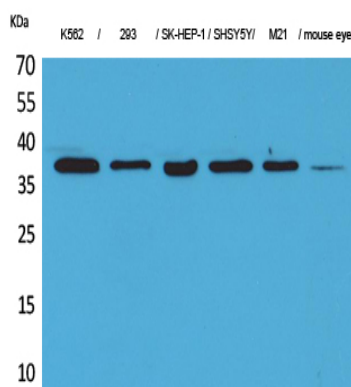


Background

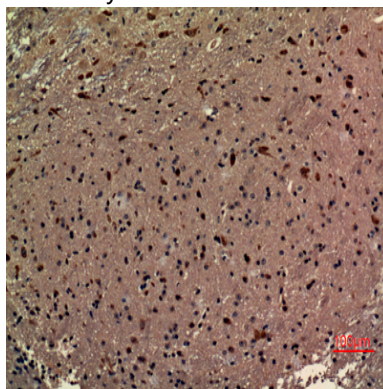
caution: Could be the product of a pseudogene., similarity: Belongs to the RRP7 family., similarity: Contains 1 RRM (RNA recognition motif) domain., caution: Could be the product of a pseudogene., similarity: Belongs to the RRP7 family., similarity: Contains 1 RRM (RNA recognition motif) domain.,

Research Area

Image Data



Western Blot analysis of K562, 293, SK-HEP-1, SHSY5Y, M21, mouse eye cells using RRP7A Polyclonal Antibody.. Secondary antibody was diluted at 1:20000



Immunohistochemical analysis of paraffin-embedded mouse-brain, antibody was diluted at 1:100

Note

For research use only.