

**Product Name: RRP22 Rabbit Polyclonal Antibody**  
**Catalog #: APRab17387**



## Summary

<b>Production Name</b>	RRP22 Rabbit Polyclonal Antibody
<b>Description</b>	Rabbit Polyclonal Antibody
<b>Host</b>	Rabbit
<b>Application</b>	WB,ELISA
<b>Reactivity</b>	Human,Mouse

## Performance

<b>Conjugation</b>	Unconjugated
<b>Modification</b>	Unmodified
<b>Isotype</b>	IgG
<b>Clonality</b>	Polyclonal
<b>Form</b>	Liquid
<b>Storage</b>	Store at 4°C short term. Aliquot and store at -20°C long term. Avoid freeze/thaw cycles.
<b>Buffer</b>	Liquid in PBS containing 50% glycerol, 0.5% BSA and 0.02% New type preservative N.
<b>Purification</b>	Affinity purification

## Immunogen

<b>Gene Name</b>	RASL10A
<b>Alternative Names</b>	RASL10A; RRP22; Ras-like protein family member 10A; Ras-like protein RRP22; Ras-related protein on chromosome 22
<b>Gene ID</b>	10633.0
<b>SwissProt ID</b>	Q92737.The antiserum was produced against synthesized peptide derived from human RASL10A. AA range:107-156

## Application

<b>Dilution Ratio</b>	WB 1:500-1:2000, ELISA 1:40000.Not yet tested in other applications.
<b>Molecular Weight</b>	30kDa

**Product Name: RRP22 Rabbit Polyclonal Antibody**  
**Catalog #: APRab17387**

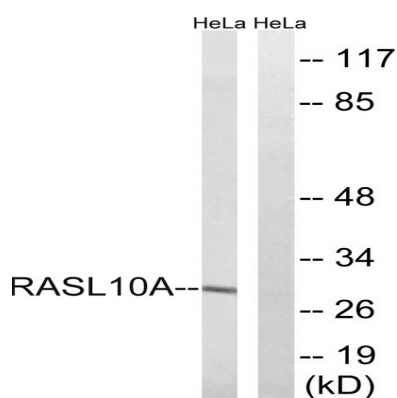


## Background

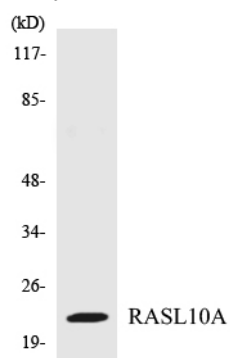
similarity:Belongs to the small GTPase superfamily. Ras family.,similarity:Belongs to the small GTPase superfamily. Ras family.,

## Research Area

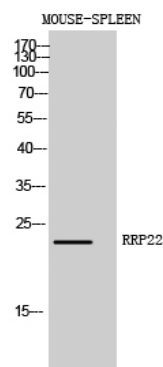
## Image Data



Western blot analysis of lysates from HeLa cells, using RASL10A Antibody. The lane on the right is blocked with the synthesized peptide.



Western blot analysis of the lysates from 293 cells using RASL10A antibody.



**Product Name: RRP22 Rabbit Polyclonal Antibody**  
**Catalog #: APRab17387**



---

Western Blot analysis of MOUSE-SPLEEN cells using RRP22 Polyclonal Antibody diluted at 1 : 1000

**Note**

For research use only.