

Summary

Production Name	RoXaN Rabbit Polyclonal Antibody
Description	Rabbit Polyclonal Antibody
Host	Rabbit
Application	WB,IHC-P,IF-P,IF-F,ICC/IF,ELISA
Reactivity	Human,Rat,Mouse

Performance

Conjugation	Unconjugated
Modification	Unmodified
Isotype	IgG
Clonality	Polyclonal
Form	Liquid
Storage	Store at 4°C short term. Aliquot and store at -20°C long term. Avoid freeze/thaw cycles.
Buffer	Liquid in PBS containing 50% glycerol, 0.5% BSA and 0.02% New type preservative N.
Purification	Affinity purification

Immunogen

Gene Name	ZC3H7B
Alternative Names	ZC3H7B; KIAA1031; Zinc finger CCCH domain-containing protein 7B; Rotavirus 'X'-associated non-structural protein; RoXaN
Gene ID	23264.0
SwissProt ID	Q9UGR2.The antiserum was produced against synthesized peptide derived from human ZC3H7B. AA range:851-900

Application

Dilution Ratio	WB 1:500-1:2000, IHC-P 1:100-1:300, ELISA 1:10000, IF-P/IF-F/ICC/IF 1:50-200
Molecular Weight	111kDa

Product Name: RoXaN Rabbit Polyclonal Antibody
Catalog #: AP Rab17330

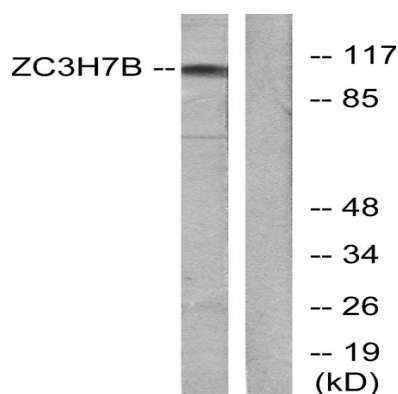


Background

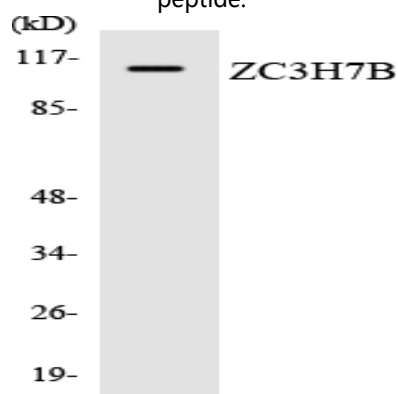
This gene encodes a protein that contains a tetratricopeptide repeat domain. The encoded protein also interacts with the rotavirus non-structural protein NSP3. [provided by RefSeq, Jul 2008], similarity: Contains 1 C2H2-type zinc finger., similarity: Contains 3 TPR repeats., similarity: Contains 4 C3H1-type zinc fingers., subcellular location: Nuclear localization seems to be depleted upon rotavirus A infection., subunit: Interacts (via LD motif) with rotavirus A NSP3 (via the coiled-coil region),

Research Area

Image Data

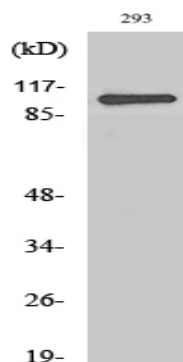


Western blot analysis of lysates from 293 cells, using ZC3H7B Antibody. The lane on the right is blocked with the synthesized peptide.

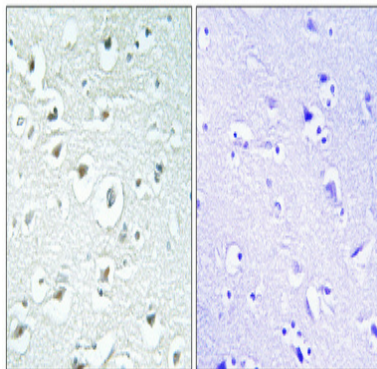


Western blot analysis of the lysates from HUVEC cells using ZC3H7B antibody.

Product Name: RoXaN Rabbit Polyclonal Antibody
Catalog #: APRab17330



Western Blot analysis of various cells using RoXaN Polyclonal Antibody cells nucleus extracted by Minute TM Cytoplasmic and Nuclear Fractionation kit (SC-003, Inventbiotech, MN, USA) .



Immunohistochemical analysis of paraffin-embedded Human brain. Antibody was diluted at 1:100 (4°, overnight) . High-pressure and temperature Tris-EDTA, pH 8.0 was used for antigen retrieval. Negative control (right) obtained from antibody was pre-absorbed by immunogen peptide.

Note

For research use only.