

**Product Name: RORγ Rabbit Polyclonal Antibody**  
**Catalog #: APRab17328**



## Summary

<b>Production Name</b>	RORγ Rabbit Polyclonal Antibody
<b>Description</b>	Rabbit Polyclonal Antibody
<b>Host</b>	Rabbit
<b>Application</b>	WB,IHC-P
<b>Reactivity</b>	Human,Mouse

## Performance

<b>Conjugation</b>	Unconjugated
<b>Modification</b>	Unmodified
<b>Isotype</b>	IgG
<b>Clonality</b>	Polyclonal
<b>Form</b>	Liquid
<b>Storage</b>	Store at 4°C short term. Aliquot and store at -20°C long term. Avoid freeze/thaw cycles.
<b>Buffer</b>	Liquid in PBS containing 50% glycerol, 0.5% BSA and 0.02% New type preservative N.
<b>Purification</b>	Affinity purification

## Immunogen

<b>Gene Name</b>	RORC RORC; NR1F3; RORG; RZRG; Nuclear receptor ROR-gamma; Nuclear receptor RZR-gamma; Nuclear receptor subfamily 1 group F member 3; Retinoid-related orphan receptor-gamma
<b>Alternative Names</b>	
<b>Gene ID</b>	6097.0
<b>SwissProt ID</b>	P51449.The antiserum was produced against synthesized peptide derived from human RORG. AA range:71-120

## Application

<b>Dilution Ratio</b>	WB 1:500-2000, IHC-P 1:50-300
<b>Molecular Weight</b>	58kDa

**Product Name: RORy Rabbit Polyclonal Antibody**  
**Catalog #: AP Rab17328**

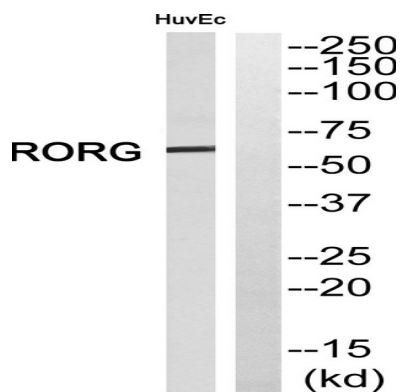


## Background

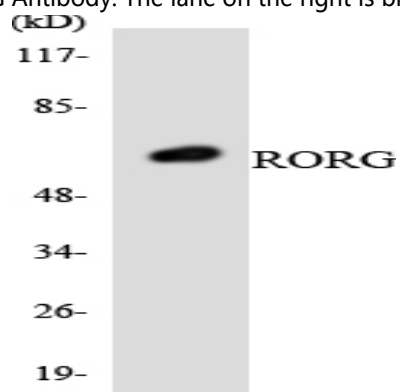
The protein encoded by this gene is a DNA-binding transcription factor and is a member of the NR1 subfamily of nuclear hormone receptors. The specific functions of this protein are not known; however, studies of a similar gene in mice have shown that this gene may be essential for lymphoid organogenesis and may play an important regulatory role in thymopoiesis. In addition, studies in mice suggest that the protein encoded by this gene may inhibit the expression of Fas ligand and IL2. Two transcript variants encoding different isoforms have been found for this gene. [provided by RefSeq, Jul 2008],function:Orphan nuclear receptor.,similarity:Belongs to the nuclear hormone receptor family.,similarity:Belongs to the nuclear hormone receptor family. NR1 subfamily.,similarity:Contains 1 nuclear receptor DNA-binding domain.,tissue specificity:Highly expressed in skeletal muscle.,

## Research Area

## Image Data

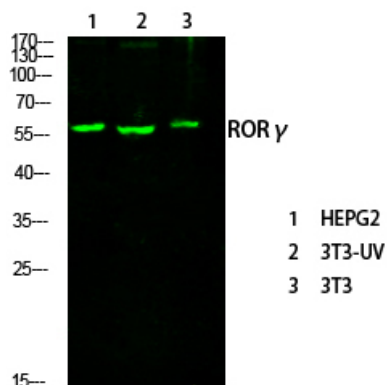


Western blot analysis of RORG Antibody. The lane on the right is blocked with the RORG peptide.

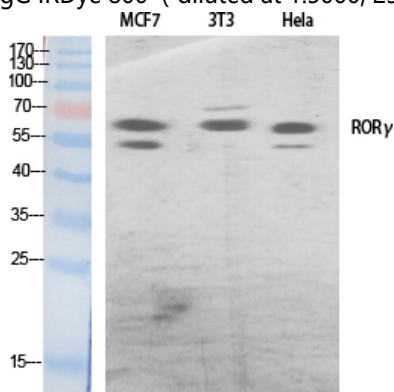


Western blot analysis of the lysates from HeLa cells using RORG antibody.

**Product Name: ROR $\gamma$  Rabbit Polyclonal Antibody**  
**Catalog #: APRab17328**



Western Blot analysis of various cells using primary antibody diluted at 1:1000 (4°C overnight) . Secondary antibody: Goat Anti-rabbit IgG IRDye 800 ( diluted at 1:5000, 25°C, 1 hour)



Western Blot analysis of various cells using ROR $\gamma$  Polyclonal Antibody diluted at 1: 500 cells nucleus extracted by Minute TM Cytoplasmic and Nuclear Fractionation kit (SC-003, Inventbiotech, MN, USA) .

## Note

For research use only.