

Summary

Production Name	Rock-2 Rabbit Polyclonal Antibody
Description	Rabbit Polyclonal Antibody
Host	Rabbit
Application	IF-P,IF-F,ICC/IF,WB,IHC-P,ELISA
Reactivity	Human,Mouse,Rat,Monkey

Performance

Conjugation	Unconjugated
Modification	Unmodified
Isotype	IgG
Clonality	Polyclonal
Form	Liquid
Storage	Store at 4°C short term. Aliquot and store at -20°C long term. Avoid freeze/thaw cycles.
Buffer	Liquid in PBS containing 50% glycerol, 0.5% BSA and 0.02% New type preservative N.
Purification	Affinity purification

Immunogen

Gene Name	ROCK2 ROCK2; KIAA0619; Rho-associated protein kinase 2; Rho kinase 2; Rho-associated;
Alternative Names	coiled-coil-containing protein kinase 2; Rho-associated, coiled-coil-containing protein kinase II; ROCK-II; p164 ROCK-2
Gene ID	9475.0
SwissProt ID	O75116. The antiserum was produced against synthesized peptide derived from human ROCK2. AA range:691-740

Application

	IF-P/IF-F/ICC/IF	1:50-200,	WB	1:500-1:2000,	IHC-P	1:100-1:300,
Dilution Ratio	Immunocytochemistry 1:200-1:1000, ELISA 1:20000. Not yet tested in other applications.					

Product Name: Rock-2 Rabbit Polyclonal Antibody
Catalog #: APRab17315



Molecular Weight

165kDa

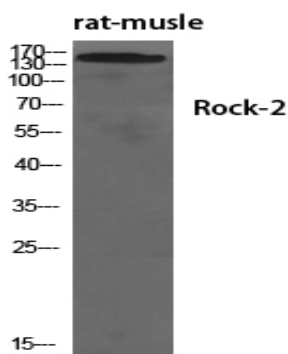
Background

The protein encoded by this gene is a serine/threonine kinase that regulates cytokinesis, smooth muscle contraction, the formation of actin stress fibers and focal adhesions, and the activation of the c-fos serum response element. This protein, which is an isozyme of ROCK1 is a target for the small GTPase Rho. [provided by RefSeq, Jul 2008], catalytic activity: ATP + a protein = ADP + a phosphoprotein., enzyme regulation: Activated by RHOA binding., function: Protein kinase that phosphorylates a large number of important signaling proteins, and thereby regulates the assembly of the actin cytoskeleton. Promotes formation of stress fibers and of focal adhesion complexes. Plays a role in smooth muscle contraction., miscellaneous: Inhibited by Y-27632., PTM: Phosphorylated upon DNA damage, probably by ATM or ATR., similarity: Belongs to the protein kinase superfamily. AGC Ser/Thr protein kinase family., similarity: Contains 1 AGC-kinase C-terminal domain., similarity: Contains 1 PH domain., similarity: Contains 1 phorbol-ester/DAG-type zinc finger., similarity: Contains 1 protein kinase domain., similarity: Contains 1 REM (Hr1) repeat., subcellular location: Cytoplasmic, and associated with actin microfilaments and the plasma membrane., subunit: Homodimer. Binds RHOA that has been activated by GTP binding. Binds IRS1, RHOB and RHOC.,

Research Area

Chemokine; Vascular smooth muscle contraction; WNT; WNT-T CELL TGF-beta; Axon guidance; Focal adhesion; Leukocyte transendothelial migration; Regulates Actin and Cytoskeleton; Pathogenic Escherichia coli infection;

Image Data



Western Blot analysis of various cells using Rock-2 Polyclonal Antibody diluted at 1: 1000

Note

For research use only.