

Product Name: RNF15 Rabbit Polyclonal Antibody
Catalog #: APRab17290



Summary

Production Name	RNF15 Rabbit Polyclonal Antibody
Description	Rabbit Polyclonal Antibody
Host	Rabbit
Application	WB,IHC-P
Reactivity	Human,Mouse

Performance

Conjugation	Unconjugated
Modification	Unmodified
Isotype	IgG
Clonality	Polyclonal
Form	Liquid
Storage	Store at 4°C short term. Aliquot and store at -20°C long term. Avoid freeze/thaw cycles.
Buffer	Liquid in PBS containing 50% glycerol, 0.5% BSA and 0.02% New type preservative N.
Purification	Affinity purification

Immunogen

Gene Name	TRIM38
Alternative Names	TRIM38; RNF15; RORET; Tripartite motif-containing protein 38; RING finger protein 15; Zinc finger protein RoRet
Gene ID	10475.0
SwissProt ID	O00635.The antiserum was produced against synthesized peptide derived from human TRIM38. AA range:161-210

Application

Dilution Ratio	WB 1:500-2000, IHC-P 1:50-300
Molecular Weight	58kDa

Product Name: RNF15 Rabbit Polyclonal Antibody
Catalog #: AP Rab17290

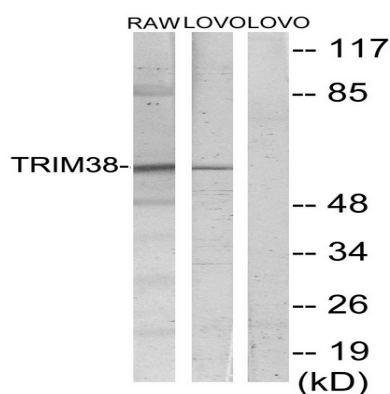


Background

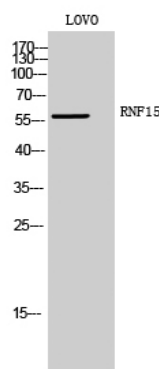
This gene encodes a member of the tripartite motif (TRIM) family. The encoded protein contains a RING-type zinc finger, B box-type zinc finger and SPRY domain. The function of this protein has not been identified. A pseudogene of this gene is located on the long arm of chromosome 4. [provided by RefSeq, Jul 2012], similarity: Contains 1 B box-type zinc finger., similarity: Contains 1 B30.2/SPRY domain., similarity: Contains 1 RING-type zinc finger., tissue specificity: Ubiquitous.,

Research Area

Image Data



Western blot analysis of lysates from LOVO and RAW264.7 cells, using TRIM38 Antibody. The lane on the right is blocked with the synthesized peptide.



Western Blot analysis of LOVO cells using RNF15 Polyclonal Antibody

Note

For research use only.