

Product Name: Rit1 Rabbit Polyclonal Antibody
Catalog #: APRab17212



Summary

Production Name	Rit1 Rabbit Polyclonal Antibody
Description	Rabbit Polyclonal Antibody
Host	Rabbit
Application	WB,ELISA,IHC-P
Reactivity	Human,Mouse

Performance

Conjugation	Unconjugated
Modification	Unmodified
Isotype	IgG
Clonality	Polyclonal
Form	Liquid
Storage	Store at 4°C short term. Aliquot and store at -20°C long term. Avoid freeze/thaw cycles.
Buffer	Liquid in PBS containing 50% glycerol, 0.5% BSA and 0.02% New type preservative N.
Purification	Affinity purification

Immunogen

Gene Name	RIT1
Alternative Names	RIT1; RIBB; RIT; ROC1; GTP-binding protein Rit1; Ras-like protein expressed in many tissues; Ras-like without CAAX protein 1
Gene ID	6016.0
SwissProt ID	Q92963.The antiserum was produced against synthesized peptide derived from human RIT1. AA range:170-219

Application

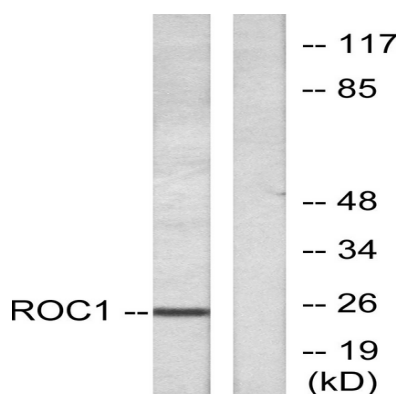
Dilution Ratio	WB 1:500-2000, IHC-P 1:50-300, ELISA 2000-20000
Molecular Weight	25kDa

Background

This gene encodes a member of a subfamily of Ras-related GTPases. The encoded protein is involved in regulating p38 MAPK-dependent signaling cascades related to cellular stress. This protein also cooperates with nerve growth factor to promote neuronal development and regeneration. Alternate splicing results in multiple transcript variants. [provided by RefSeq, Feb 2012],enzyme regulation:Alternate between an inactive form bound to GDP and an active form bound to GTP.,function:Plays a crucial role in coupling NGF stimulation to the activation of both EPHB2 and MAPK14 signaling pathways and in NGF-dependent neuronal differentiation.,miscellaneous:Shows rapid uncatalyzed guanine nucleotide dissociation rates, which are much faster than those of most Ras subfamily members.,miscellaneous:Stimulation of the NGF and EGF receptor signaling pathways results in rapid and prolonged activation.,similarity:Belongs to the small GTPase superfamily. Ras family.,subunit:Interacts with MLLT4, the C-terminal domain of RALGDS and RLF, but not with RIN1 and PIK3CA. RLF binds exclusively to the active GTP-bound form. Strongly interacts with BRAF, but only weakly with RAF1. BARF and RAF1 association is dependent upon the GTP-bound state. Interacts with RGL3.,tissue specificity:Expressed in many tissues.,

Research Area

Image Data



Product Name: Rit1 Rabbit Polyclonal Antibody
Catalog #: APRab17212



Western Blot analysis of various cells using Rit1 Polyclonal Antibody diluted at 1: 500

Note

For research use only.