

Product Name: RIN3 Rabbit Polyclonal Antibody
Catalog #: APRab17199



Summary

Production Name	RIN3 Rabbit Polyclonal Antibody
Description	Rabbit Polyclonal Antibody
Host	Rabbit
Application	WB,ELISA,IHC-P
Reactivity	Human,Rat,Mouse

Performance

Conjugation	Unconjugated
Modification	Unmodified
Isotype	IgG
Clonality	Polyclonal
Form	Liquid
Storage	Store at 4°C short term. Aliquot and store at -20°C long term. Avoid freeze/thaw cycles.
Buffer	Liquid in PBS containing 50% glycerol, 0.5% BSA and 0.02% New type preservative N.
Purification	Affinity purification

Immunogen

Gene Name	RIN3
Alternative Names	RIN3; Ras and Rab interactor 3; Ras interaction/interference protein 3
Gene ID	79890.0
SwissProt ID	Q8TB24.The antiserum was produced against synthesized peptide derived from human RIN3. AA range:391-440

Application

Dilution Ratio	WB 1:500-2000, IHC-P 1:50-300, ELISA 2000-20000
Molecular Weight	107kDa

Background

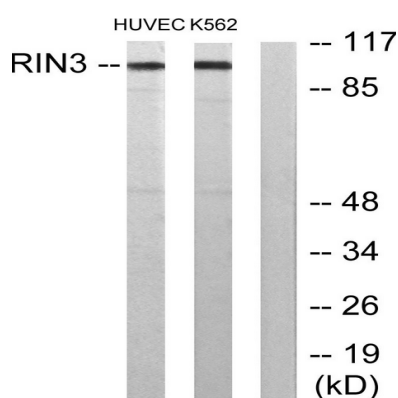
Product Name: RIN3 Rabbit Polyclonal Antibody
Catalog #: AP Rab17199



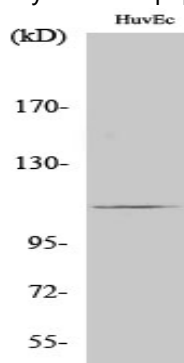
Summary: This protein encoded by this gene is a member of the RIN family of Ras interaction-interference proteins, which are binding partners to the RAB5 small GTPases. The protein functions as a guanine nucleotide exchange for RAB5B and RAB31. Alternative splicing results in multiple transcript variants. [provided by RefSeq, Feb 2016], caution: The region from Asp-168 to Pro-327 is deduced from the genomic sequence by similarity to the mouse sequence., function: Potential Ras effector protein. May function as a guanine nucleotide exchange (GEF), by exchanging bound GDP for free GTP., similarity: Belongs to the RIN (Ras interaction/interference) family., similarity: Contains 1 Ras-associating domain., similarity: Contains 1 SH2 domain., similarity: Contains 1 VPS9 domain., subcellular location: Activation of tyrosine phosphorylation signaling induces translocation to cytoplasmic vesicles., subunit: Interacts with RAB5B and BIN1., tissue specificity: Widely expressed.,

Research Area

Image Data



Western blot analysis of lysates from HUVEC and K562 cells, using RIN3 Antibody. The lane on the right is blocked with the synthesized peptide.



Western Blot analysis of various cells using RIN3 Polyclonal Antibody

Product Name: RIN3 Rabbit Polyclonal Antibody
Catalog #: APRab17199



Note

For research use only.