

Product Name: Ribosomal Protein S8 Rabbit Polyclonal Antibody
Catalog #: APRab17190



Summary

Production Name	Ribosomal Protein S8 Rabbit Polyclonal Antibody
Description	Rabbit Polyclonal Antibody
Host	Rabbit
Application	WB,IHC-P,IF-P,IF-F,ICC/IF,ELISA
Reactivity	Human,Mouse,Rat

Performance

Conjugation	Unconjugated
Modification	Unmodified
Isotype	IgG
Clonality	Polyclonal
Form	Liquid
Storage	Store at 4°C short term. Aliquot and store at -20°C long term. Avoid freeze/thaw cycles.
Buffer	Liquid in PBS containing 50% glycerol, 0.5% BSA and 0.02% New type preservative N.
Purification	Affinity purification

Immunogen

Gene Name	RPS8
Alternative Names	RPS8; OK/SW-cl.83; 40S ribosomal protein S8
Gene ID	6202.0
SwissProt ID	P62241.The antiserum was produced against synthesized peptide derived from human RPS8. AA range:111-160

Application

Dilution Ratio	WB 1:500-1:2000, IHC-P 1:100-1:300, ELISA 1:20000, IF-P/IF-F/ICC/IF 1:50-200
Molecular Weight	30kDa

Product Name: Ribosomal Protein S8 Rabbit Polyclonal Antibody
Catalog #: AP Rab17190



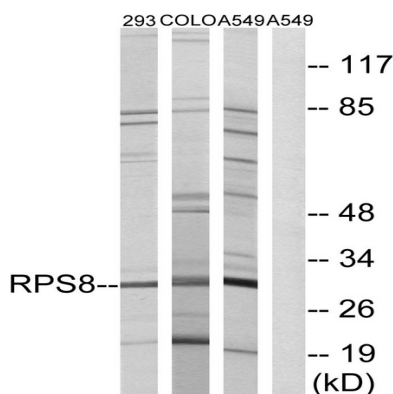
Background

Ribosomes, the organelles that catalyze protein synthesis, consist of a small 40S subunit and a large 60S subunit. Together these subunits are composed of 4 RNA species and approximately 80 structurally distinct proteins. This gene encodes a ribosomal protein that is a component of the 40S subunit. The protein belongs to the S8E family of ribosomal proteins. It is located in the cytoplasm. Increased expression of this gene in colorectal tumors and colon polyps compared to matched normal colonic mucosa has been observed. This gene is co-transcribed with the small nucleolar RNA genes U38A, U38B, U39, and U40, which are located in its fourth, fifth, first, and second introns, respectively. As is typical for genes encoding ribosomal proteins, there are multiple processed pseudogenes of this gene dispersed through the genome. [provided by RefSeq, Jul 2008],similarity:Belongs to the ribosomal protein S8e family.,

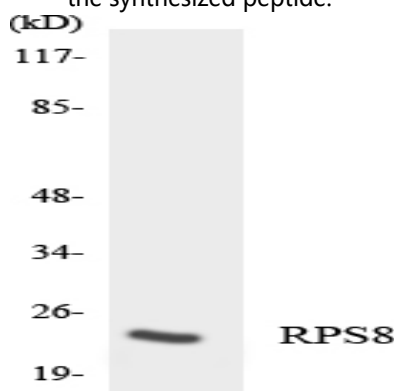
Research Area

Ribosome;

Image Data

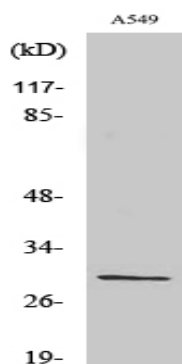


Western blot analysis of lysates from A549, 293, and COLO cells, using RPS8 Antibody. The lane on the right is blocked with the synthesized peptide.



Western blot analysis of the lysates from Jurkat cells using RPS8 antibody.

**Product Name: Ribosomal Protein S8 Rabbit Polyclonal
Antibody**
Catalog #: APRab17190



Western Blot analysis of various cells using Ribosomal Protein S8 Polyclonal Antibody diluted at 1: 2000

Note

For research use only.