

Product Name: Ribosomal Protein S4X Rabbit Polyclonal Antibody
Catalog #: APRab17186

Summary

Production Name	Ribosomal Protein S4X Rabbit Polyclonal Antibody
Description	Rabbit Polyclonal Antibody
Host	Rabbit
Application	WB,ELISA,IHC-P
Reactivity	Human,Mouse,Rat,Cat

Performance

Conjugation	Unconjugated
Modification	Unmodified
Isotype	IgG
Clonality	Polyclonal
Form	Liquid
Storage	Store at 4°C short term. Aliquot and store at -20°C long term. Avoid freeze/thaw cycles.
Buffer	Liquid in PBS containing 50% glycerol, 0.5% BSA and 0.02% New type preservative N.
Purification	Affinity purification

Immunogen

Gene Name	RPS4X
Alternative Names	RPS4X; CCG2; RPS4; SCAR; 40S ribosomal protein S4; X isoform; SCR10; Single copy abundant mRNA protein
Gene ID	6191.0
SwissProt ID	P62701.The antiserum was produced against synthesized peptide derived from human RPS4X. AA range:81-130

Application

Dilution Ratio	WB 1:500-2000, IHC-P 1:50-300, ELISA 2000-20000
Molecular Weight	30kDa

Product Name: Ribosomal Protein S4X Rabbit Polyclonal Antibody
Catalog #: APRab17186

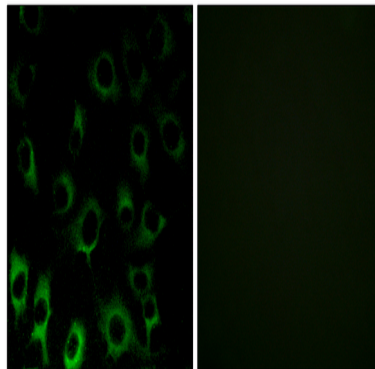
Background

Cytoplasmic ribosomes, organelles that catalyze protein synthesis, consist of a small 40S subunit and a large 60S subunit. Together these subunits are composed of 4 RNA species and approximately 80 structurally distinct proteins. This gene encodes ribosomal protein S4, a component of the 40S subunit. Ribosomal protein S4 is the only ribosomal protein known to be encoded by more than one gene, namely this gene and ribosomal protein S4, Y-linked (RPS4Y). The 2 isoforms encoded by these genes are not identical, but are functionally equivalent. Ribosomal protein S4 belongs to the S4E family of ribosomal proteins. This gene is not subject to X-inactivation. It has been suggested that haploinsufficiency of the ribosomal protein S4 genes plays a role in Turner syndrome; however, this hypothesis is controversial. As is typical for genes encoding ribosomal proteins, there are multiple processed pseudomiscellaneous: This isoform is encoded on the X chromosome.,similarity:Belongs to the ribosomal protein S4e family.,similarity:Contains 1 S4 RNA-binding domain.,

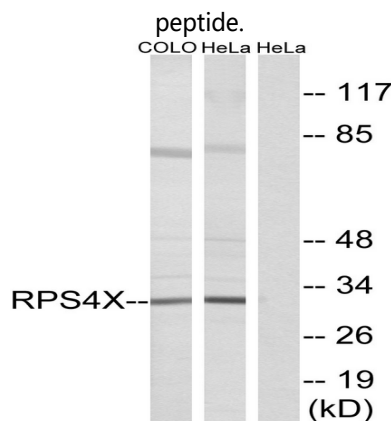
Research Area

Ribosome;

Image Data

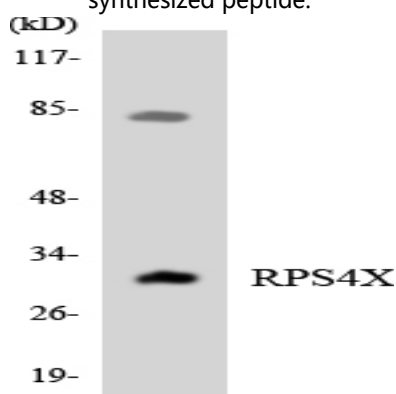


Immunofluorescence analysis of HUVEC cells, using RPS4X Antibody. The picture on the right is blocked with the synthesized

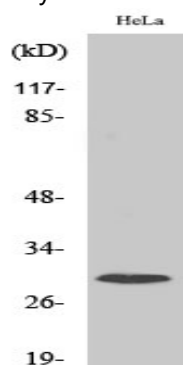


Product Name: Ribosomal Protein S4X Rabbit Polyclonal Antibody
Catalog #: APRab17186

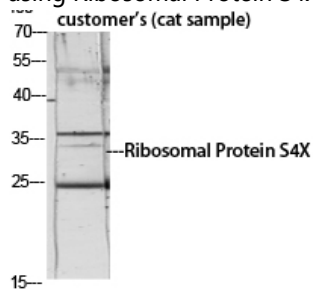
Western blot analysis of lysates from HeLa and COLO cells, using RPS4X Antibody. The lane on the right is blocked with the synthesized peptide.



Western blot analysis of the lysates from HT-29 cells using RPS4X antibody.



Western Blot analysis of various cells using Ribosomal Protein S4X Polyclonal Antibody diluted at 1 : 1000



Western Blot analysis of customer 's (cat sample) using Ribosomal Protein S4X Polyclonal Antibody diluted at 1 : 1000

Note

For research use only.