

**Product Name: Ribosomal Protein S27L Rabbit Polyclonal Antibody**  
**Catalog #: APRab17184**

---

## Summary

<b>Production Name</b>	Ribosomal Protein S27L Rabbit Polyclonal Antibody
<b>Description</b>	Rabbit Polyclonal Antibody
<b>Host</b>	Rabbit
<b>Application</b>	WB,IHC-P,IF-P,IF-F,ICC/IF,ELISA
<b>Reactivity</b>	Human,Mouse

## Performance

<b>Conjugation</b>	Unconjugated
<b>Modification</b>	Unmodified
<b>Isotype</b>	IgG
<b>Clonality</b>	Polyclonal
<b>Form</b>	Liquid
<b>Storage</b>	Store at 4°C short term. Aliquot and store at -20°C long term. Avoid freeze/thaw cycles.
<b>Buffer</b>	Liquid in PBS containing 50% glycerol, 0.5% BSA and 0.02% New type preservative N.
<b>Purification</b>	Affinity purification

## Immunogen

<b>Gene Name</b>	RPS27L
<b>Alternative Names</b>	RPS27L; 40S ribosomal protein S27-like
<b>Gene ID</b>	51065.0
<b>SwissProt ID</b>	Q71UM5.The antiserum was produced against synthesized peptide derived from human RPS27L. AA range:1-50

## Application

<b>Dilution Ratio</b>	WB 1:500-1:2000, IHC-P 1:100-1:300, ELISA 1:10000, IF-P/IF-F/ICC/IF 1:50-200
<b>Molecular Weight</b>	18kDa

**Product Name: Ribosomal Protein S27L Rabbit  
Polyclonal Antibody  
Catalog #: APRab17184**



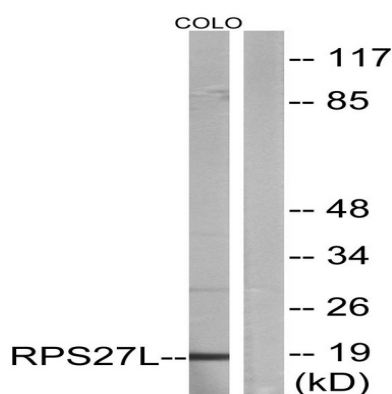
## Background

This gene encodes a protein sharing 96% amino acid similarity with ribosomal protein S27, which suggests the encoded protein may be a component of the 40S ribosomal subunit. [provided by RefSeq, Jul 2008],cofactor: Binds 1 zinc ion per subunit „similarity: Belongs to the ribosomal protein S27e family.,

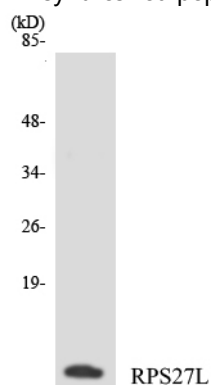
## Research Area

Ribosome;

## Image Data



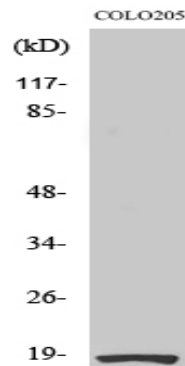
Western blot analysis of lysates from COLO cells, using RPS27L Antibody. The lane on the right is blocked with the synthesized peptide.



Western blot analysis of the lysates from COLO205 cells using RPS27L antibody.

**Product Name: Ribosomal Protein S27L Rabbit  
Polyclonal Antibody  
Catalog #: APRab17184**

---



Western Blot analysis of various cells using Ribosomal Protein S27L Polyclonal Antibody

### **Note**

For research use only.